

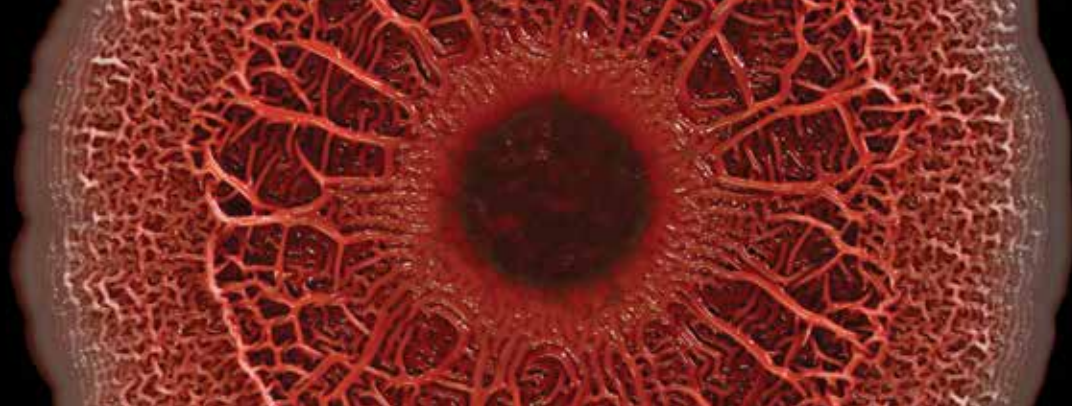


# HARVARD MUSEUMS<sup>OF</sup> SCIENCE & CULTURE

**FALL 2017 PROGRAMS • EXHIBITS • CLASSES**

Collection of Historical Scientific Instruments  
Harvard Museum of Natural History  
Harvard Semitic Museum  
Peabody Museum of Archaeology & Ethnology





Bacterial colony, *Pseudomonas aeruginosa*. On view in *World in a Drop: Photographic Explorations of Microbial Life*. Courtesy of Scott Chimileski and Roberto Kolter

## One world. Four museums.

Language is a critical part of the museum experience. Museums tell stories. They display evidence and information, inviting people to observe critically, listen generously, and expand their understanding. Available to all, museums unite people in wonder and curiosity. While language may be used to disguise or mislead in some spheres, museums champion clarity, knowledge, and open-minded consideration.

Much of what HMSC does is also about language in its many forms. The fall HMSC lecture series includes talks on Maya hieroglyphs, mummies and burial sites, the visualization of microbes, and celestial measurement. The use of reliefs in ancient Mesopotamia to commemorate royal triumphs will be part of an exhibit opening at the Harvard Semitic Museum, and rarely seen specimens of diseased fruit, created to help teach Harvard botany students over 100 years ago, will go on display in the Glass Flowers gallery.

HMSC provides access to 28 million objects and specimens in Harvard University's collections—some of the most significant holdings in the world. Our museums draw on those collections to celebrate the natural world, scientific innovation, and human cultural history. We hope you will join us this fall for the new HMSC exhibits and programs. Bring a friend and share the conversation.

Come see the world, in four museums.

- Collection of Historical Scientific Instruments
- Harvard Museum of Natural History
- Harvard Semitic Museum
- Peabody Museum of Archaeology & Ethnology

## TABLE OF CONTENTS

Programs	2-15
Exhibits	16-17
Classes	18
Museum Tours	19
Membership	20
Map	21

Free event parking is available at the 52 Oxford Street Garage for all events marked with a Ⓟ (not applicable to classes or exhibitions).

### Front Cover Images (clockwise from top left)



#### Stela D, Copan, Honduras. Plaster cast of north side, c. 1893.

This Late Classic monument was erected by Copan's Ruler 13, Waxaklajun Ub'aah K'awiil, on July 24, 736 CE. In place of the usual head forms, the hieroglyphs were carved in rare full-figure variants. The intertwined arms and legs of animated birds, animals, and human figures represent actions that go beyond their linguistic meaning to imply lively speech or sounds.

Peabody Museum of Archaeology & Ethnology, 93-27-20-C579.2



#### Funerary Stela of the Mayor Ituerneheh

This snippet of hieroglyphic text is part of the traditional "offering formula" that usually adorns such funerary stelae. It often starts with the phrase "An offering which the King gives to Anubis...." Other gods may be mentioned, and then quantities of offerings, such as bread, beer, oxen, fowl, alabaster, and unguents, are listed—all for the deceased stela owner's spirit. This stela shows the somewhat awkward provincial style of hieroglyphs typical of the First Intermediate Period (c. 2100-2040 BCE).

Painted limestone. Possibly from Naga ed-Deir (purchased from M. Casira, Cairo, in 1902). Harvard Semitic Museum, 1902.17.31



#### Typewriter for a Non-Alphabetic Language

The Amharic script of Ethiopia has more than 200 characters that are laid down in a complex way. Legible documents are difficult to write by hand. Typewriters like this are essential for businesses to communicate clearly with each other and with the Ethiopian government. Purchased in Addis Ababa, c. 1959, this Olivetti typewriter was brought out of the country in 1975 during the revolution. Collection of Historical Scientific Instruments, 2011-1-0067



#### Honeybee Hive

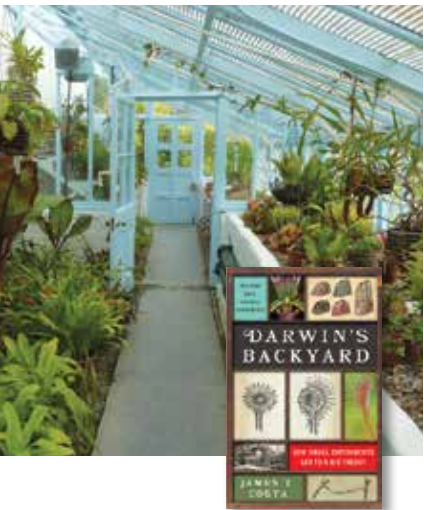
*Apis mellifera*, the European honeybee, is believed to have originated in Africa and spread to northern Europe, India, and China. It was brought to North America with early colonists. Honeybees are highly social insects, living in complex societies where they cooperate to find food, defend the group, and reproduce. The museum displays a seasonal observation hive in the Arthropods Gallery. Harvard Museum of Natural History

Thursday, September 14, 6:00 pm

## Darwin's Backyard

### How Small Experiments Led to a Big Theory

James T. Costa, Professor, Department of Biology, Western Carolina University; Executive Director, Highlands Biological Station, University of North Carolina



Charles Darwin, iconic evolutionary biologist, was a naturalist with a passion for experiments. Sometimes quirky, always illuminating, Darwin's experiments were an ever-present part of his home life, taking over his house, garden, and greenhouse, as well as surrounding meadows and woodlands, while often involving family, friends, and neighbors as research assistants. James Costa will discuss this inventive side of Darwin, detailed in his new book, *Darwin's Backyard: How Small Experiments Led to a Big Theory*. Following the lecture, visit the museum galleries, where Harvard students and museum educators will demonstrate a selection of Darwin's experiments.

#### Evolution Matters Lecture Series

Lecture, Book Signing, Special Event. Free and open to the public. HMNH Geological Lecture Hall, 24 Oxford Street (P)

Series supported by a generous gift from Drs. Herman and Joan Suit

Monday, September 18, 6:00 pm

## Two Ways of Knowing

### Creating Ancient Maya History through Inscriptions and Archaeology

Simon Martin, Associate Curator and Keeper of Collections, American Section, University of Pennsylvania Museum of Archaeology and Anthropology



Scholars have made significant advances in the interpretation of ancient Maya hieroglyphs in the past forty years. The deep understanding of these inscriptions makes the study of the ancient Maya as complex and layered as that of Mesopotamian, Egyptian, Greek, or Roman civilizations—each of which combines the reading of texts with the physical remains of archaeological excavations. This important development, however, also raises issues about how the integration of textual and material evidence is best achieved. Simon Martin will explore this challenge within the context of Maya studies and review the academic debate over the ways in which history is both discovered and created.

#### 2017 Tatiana Proskouriakoff Lecture and Reception

Free and open to the public. PMAE Geological Lecture Hall, 24 Oxford Street (P)

Tuesday, September 19, 6:00 pm

## Cracking Bones, Gnawing Flesh, and Pondering Hearts

### Body, Mind, and Medicine in Ancient Mesopotamia

Ulrike Steinert, Research Associate, Babylonian Medicine, Department of History and Cultural Studies, Freie Universität Berlin

The human body has not changed significantly during recorded history—we share sensory faculties, metabolism, sexuality, aging, and mortality with even our distant ancestors. Concepts of body and self, on the other hand, evolve as cultural and historical constructs that vary widely between time and place. Drawing upon ancient texts and visual representations, Ulrike Steinert will discuss how categories of “body” and “mind” were construed in Mesopotamia more than three thousand years ago and will consider social aspects of the body at the intersection of cultural norms, ideals, and gender.

Lecture. Free and open to the public. HMSC Geological Lecture Hall, 24 Oxford Street (P)

Presented in collaboration with the Department of Near Eastern Languages and Civilizations, Harvard University



Tuesday, September 26, 6:00 pm

## Tales of the Moche Kings and Queens

### Elite Burials from the North Coast of Peru

Jeffrey Quilter, William and Muriel Seabury Howells Director of the Peabody Museum of Archaeology and Ethnology; Senior Lecturer on Anthropology, Harvard University

This year marks the thirtieth anniversary of the discovery of the Lord of Sipán, one of the most spectacular gold tombs found in the Americas and the first of many elite tombs found in northern Peru. The remains of these burial sites provide a treasure trove of information about ancient Moche art, technology, and beliefs. Jeffrey Quilter will share firsthand information about elite burial excavations and discuss how studies of these tombs have shaped our understating of Moche social and political organization, helping to settle the debate over whether the Moche were a state society.

Lecture. Free and open to the public. PMAE Geological Lecture Hall, 24 Oxford Street (P)

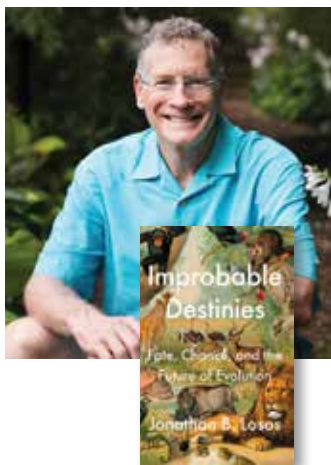


Wednesday, September 27, 6:00 pm

## Improbable Destinies

### Fate, Chance, and the Future of Evolution

Jonathan Losos, Monique and Philip Lehner Professor for the Study of Latin America; Professor of Organismic and Evolutionary Biology, Department of Organismic and Evolutionary Biology; Curator in Herpetology, Museum of Comparative Zoology, Harvard University



Nature abounds with instances of convergence: structures or adaptations that have evolved independently multiple times. But evolutionary biologists, most notably Harvard's Stephen Jay Gould, also point out examples of contingency, cases where the tiniest change—a random mutation or an ancient butterfly sneeze—caused evolution to take a different course. What role does each force play in the natural world? Are today's plants, animals, and humans inevitabilities or evolutionary flukes? Jonathan Losos will discuss these questions and more as he presents content from his new book, *Improbable Destinies: Fate, Chance, and the Future of Evolution*.

#### Evolution Matters Lecture Series

Lecture and Book Signing. Free and open to the public. **HMNH**  
Geological Lecture Hall, 24 Oxford Street (P)  
Series supported by a generous gift from Drs. Herman and Joan Suit

Thursday, September 28, 6:00 pm

## Inside the Tombs of Saqqara

### The Ancient Egyptian Burial Site Revealed

Ramadan B. Hussein, Director, Saqqara Saite Tombs Project, Institute for Ancient Near Eastern Studies (IANES), University of Tübingen, Germany



The pyramids and tombs of Saqqara served as the cemetery for the ancient Egyptian capital, Memphis. Recent excavations south of the pyramid of King Unas have revealed a significant embalming workshop containing a unique set of measuring cups and bowls. These are inscribed with the names of oils and substances used in mummification. Ramadan Hussein will talk about this discovery and its significance to understanding ancient Egyptian funerary rituals.

Lecture. Free and open to the public. **HSM**  
Visit website for event details: [www.semiticmuseum.fas.harvard.edu](http://www.semiticmuseum.fas.harvard.edu) (P)

Tuesday, October 3, 6:00 pm

## The Future of Happiness

### How Communication Technologies Will Change Our World—Or Not

Laura Kubzansky, Lee Kum Kee Professor of Social and Behavioral Sciences; Co-Director, Lee Kum Sheung Center for Health and Happiness, Harvard T.H. Chan School of Public Health

Jukka-Pekka Onnela, Associate Professor of Biostatistics, Department of Biostatistics, Harvard T.H. Chan School of Public Health

Kasisomayajula "Vish" Viswanath, Lee Kum Kee Professor of Health Communication; Co-Director, Lee Kum Sheung Center for Health and Happiness, Harvard T.H. Chan School of Public Health

Jonathan L. Zittrain, George Bemis Professor of International Law, John F. Kennedy School of Government; Professor, Computer Science, John A. Paulson School of Engineering and Applied Sciences; Vice Dean, Library and Information Resources, Harvard Law School; Faculty Co-Director, Berkman Klein Center for Internet and Society, Harvard University



What impact are information and communication technologies such as the Internet and social media having on our health, politics, and culture? While there is considerable controversy about this topic, informed analysis and empirical evidence to address it are lacking. In this discussion, an interdisciplinary group of experts from across Harvard University will debate the impact of these technologies on health, happiness, and well-being and discuss future implications for policy, practice, and culture.

Panel Discussion. Free and open to the public. **HMNH/PMAE**

Geological Lecture Hall, 24 Oxford Street (P)

Presented in collaboration with the Lee Kum Sheung Center for Health and Happiness, Harvard T.H. Chan School of Public Health, Harvard University

Wednesday, October 4, 6:00 pm

## Scaling the Glass Universe

Dava Sobel, Writer; Former Science Reporter, *The New York Times*

In the 1880s, physicist and astronomer Edward Pickering invented a new system to photograph the sky that revolutionized our understanding of stars. His achievements in science relied on the work of more than 80 women—known as the Harvard Observatory "computers"—who analyzed and catalogued data from thousands of photographs. Dava Sobel will discuss the women's significant contributions to astronomy, as well as Pickering's visionary initiative to establish an observatory in Peru that expanded scientists' notions of scale and space.

Lecture and Book Signing. Free and open to the public. **CHSI**

Visit website for event details: [www.chsi.harvard.edu](http://www.chsi.harvard.edu) (P)

Presented in collaboration with the Harvard-Smithsonian Center for Astrophysics



Monday, October 9, 12:00–4:00 pm

## Zooarchaeology Laboratory Open House



Enjoy a behind-the-scenes visit to a major museum lab that helps archaeologists identify excavated animal bones. Are the bones from an ancient human occupation site or last year's picnic? Researchers will demonstrate techniques using skeletons of modern animals. This is a popular event for school-age children. If you have found a bone in your backyard, bring it with you and have it identified!

Special Event (all ages). Regular museum admission rates apply. **PMAE**  
Peabody Museum of Archaeology & Ethnology, 11 Divinity Avenue ⓘ

Wednesday, October 11, 10:00 am–4:00 pm

## National Fossil Day

### Meet a Paleontologist

Celebrate National Fossil Day with ancient trilobites, sea scorpions, saber-toothed cats, giant ground sloths, and more. Meet Harvard paleontologists and learn about the amazing prehistoric animals on exhibit. Bring your curiosity and questions to this all-ages event!

Special Event. Regular museum admission rates apply. **HMNH**  
Visit website for details: [www.hmn.harvard.edu](http://www.hmn.harvard.edu).  
Harvard Museum of Natural History, 26 Oxford Street



Wednesday, October 11, 6:00 pm

## Tales of Hopi Pottery

### The Legacy of Historic Museum Collections

Lea S. McChesney, Curator of Ethnology, Maxwell Museum of Anthropology, The University of New Mexico

Harvard's Peabody Museum houses an extraordinary collection of historic Hopi pottery (c. 1400–1900 CE), collected in the late nineteenth century by Thomas V. Keam, an Arizona trading post operator. Lea S. McChesney will discuss her work documenting and analyzing this collection, initiatives to facilitate access to heritage resources by contemporary Hopi practitioners, and recent shifts in the ways museums, researchers, and Native communities collaborate to use and interpret legacy collections.

Lecture. Free and open to the public. **PMAE**  
Geological Lecture Hall, 24 Oxford Street ⓘ



Thursday, October 12, 6:00 pm

## Divine Creatures

### Animal Mummies in Ancient Egypt

Salima Ikram, Visiting Professor, Yale University; Distinguished University Professor, Department of Sociology, Egyptology and Anthropology, The American University in Cairo

The relationship between humans and animals is complex, with mutual dependencies that are practical, psychological, and even theological. Ancient Egyptian animal mummies are a particular manifestation of this web of interrelations. Salima Ikram will discuss different types of Egyptian animal mummies and explain how and why they were made, the theological and aesthetic decisions that went into their "packaging," and what each type meant to the ancient Egyptians. She will also illustrate how animal mummies shape perceptions of ancient Egypt and influence contemporary thought and art.

Lecture. Free and open to the public. **HSM**  
Visit website for event details:  
[www.semiticmuseum.fas.harvard.edu](http://www.semiticmuseum.fas.harvard.edu) ⓘ



Sunday, October 15, 2:00–4:00 pm

## Fabulous Fungus Fair

Explore the wondrous world of fungi! Join Harvard students for a closer look at the mushrooms, yeasts, and molds found in gardens, forests, and labs—even in our own refrigerators. This is an opportunity to investigate museum collections and participate in hands-on activities led by Harvard students.

Special Event. Regular museum admission rates apply. **HMNH**  
Harvard Museum of Natural History, 26 Oxford Street



Tuesday, October 17, 6:00 pm

## The Border Wall

Life and Injury on the Frontlines

Ieva Jusionyte, Assistant Professor of Anthropology and Social Studies, Department of Anthropology and Committee on Degrees in Social Studies; Faculty Associate, Weatherhead Center for International Affairs, Harvard University



The idea of building a wall on the U.S./Mexico border serves as a potent symbol across the political spectrum—a means of assuaging social and economic anxieties by placing them onto a remote frontier. Ieva Jusionyte will consider how an anthropological analysis of the state, borders, and security can help people understand the meaning and impact of such a wall. Drawing on ethnographic research with emergency responders who rescue those injured in government actions against drugs and unauthorized migration, she will discuss how deploying “tactical infrastructure” (of which the wall is but one piece) changes everyday life on both sides of the border.

Lecture. Free and open to the public. **PMAE**  
Geological Lecture Hall, 24 Oxford Street

Thursday, October 19, 6:00 pm

## Wonders of the Microbial World

Scott Chimileski, Microbiologist and Photographer, Kolter Lab, Harvard Medical School, Harvard University

Roberto Kolter, Professor, Department of Microbiology and Immunobiology, Harvard Medical School, Harvard University

In this lecture, Scott Chimileski and Roberto Kolter will share their fascination with the wonders of the microbial world through vignettes and images from their new book, *Life at the Edge of Sight: A Photographic Exploration of the Microbial World*. Their presentation will feature a stunning visual exploration of microbes, from the pioneering findings of a seventeenth-century visionary to magnificent close-ups of the inner workings and cooperative communities of Earth’s most prolific—but often invisible—organisms.

Lecture and Book Signing. Free and open to the public. **HMNH**  
Geological Lecture Hall, 24 Oxford Street  
Related exhibition: *World in a Drop: Photographic Explorations of Microbial Life*, at the Harvard Museum of Natural History



Tuesday, October 24, 7:30 pm

## The Art and Artistry of Wallace Chan

Wallace Chan, Jewelry Artist

Wallace Chan is known internationally for his exceptional work as a jewelry artist and innovator. Gemstones have been the focus of his life for over forty years, since becoming a gemstone-carving apprentice at age sixteen. His innovations have included the use of titanium in jewelry creation, the invention of a patented jadeite thinning and luminosity-enhancing technology, and the use of unique gemstone settings without metal claws. In this presentation, Wallace Chan will share the philosophies, inspirations, emotions, and processes behind his artwork.

Lecture. Free and open to the public. **HMNH**  
Geological Lecture Hall, 24 Oxford Street  
Presented in collaboration with the Fashion Council of the Museum of Fine Arts, Boston



## Día de los Muertos/Day of the Dead Celebration at the Peabody Museum

Events will be held at the Peabody Museum of Archaeology & Ethnology, 11 Divinity Ave, Cambridge. Co-sponsored by the Consulate General of Mexico in Boston and the Mexico, Central America, and Caribbean Program at the David Rockefeller Center for Latin American Studies, Harvard University. For details, visit: [www.peabody.harvard.edu](http://www.peabody.harvard.edu)

Wednesday, November 1, 4:00–8:00 pm

### Museum Open House and Evening Celebration

Remember and celebrate your departed loved ones at this year's Día de los Muertos altar, savor traditional Mexican hot chocolate and *pan de muerto*, and enjoy a presentation by Harvard Professor David Carrasco as part of this festive evening of music and community.

Special Event. Free and open to the public. Reservations required. PMAE Visit website for event details: [www.peabody.harvard.edu](http://www.peabody.harvard.edu) ⓘ



Saturday, November 4, 12:00–4:00 pm

### Celebración Familiar • Family Celebration

Live music, dancers, and beautiful decorations help to make this a joyful event designed to remember and welcome back the spirits of loved ones. Decorate a sugar skull (additional \$6 fee), make *papel picado* (cut paper banners), *cempasúchil* flowers, and other artwork, and write a message in any language you choose to place upon the Día de los Muertos altar.

Family Event. No advance ticket required. PMAE

*Pan de muerto* (sweet bun) and activities free with regular museum admission. ⓘ

Monday, November 6, 6:00 pm

## The David Rockefeller Beetle Collection

Brian D. Farrell, Curator in Entomology, Museum of Comparative Zoology; Professor of Biology, Department of Organismic and Evolutionary Biology; Director, David Rockefeller Center for Latin American Studies, Harvard University



At the heart of every great collection, be it art, books, or specimens, lies the soul of a passionate collector. David Rockefeller had a passion for beetles and collected more than 150,000 specimens, beginning as a seven-year-old naturalist and continuing throughout his life. This fall, his collection arrives at Harvard, where it will be housed at the Museum of Comparative Zoology. Brian Farrell will discuss the development of the collection and its significance to understanding Earth's biodiversity.

Lecture. Free and open to the public. HMNH Geological Lecture Hall, 24 Oxford Street ⓘ

Presented in collaboration with the David Rockefeller Center for Latin American Studies, Harvard University

Wednesday, November 8, 6:00 pm

## Decoding Maya Hieroglyphs with 3D Technology

Barbara Fash, Director, Corpus of Maya Hieroglyphic Inscriptions Program and the Gordon R. Willey Laboratory for Mesoamerican Studies, Peabody Museum of Archaeology & Ethnology

The Peabody Museum has conducted archaeological research in the Maya site of Copan, Honduras, since the 1890s. One of Copan's most iconic elements is a staircase made of over 620 blocks carved with Maya glyphs. Dating back to the eighth century CE, this stairway has captivated Mayanists since its discovery, but the meaning of its texts has remained a mystery—until now. Barbara Fash will discuss how 3D technology and scholarly collaborations are merging to decode the Hieroglyphic Stairway, in conjunction with Honduran and international organizations aimed at conserving this World Heritage Site.



Lecture. Free and open to the public. PMAE Geological Lecture Hall, 24 Oxford Street ⓘ

Sunday, November 12, 1:00–4:00 pm

## Microbes Mini-Festival!

Join HMNH educators, Harvard researchers, and the Art+Bio Collaborative to investigate the world of microbes through observation, stories, and art explorations. Try hands-on activities, observe real microbes hiding in unexpected places, and learn about their role in our lives. Explore the new HMNH exhibit, *World in a Drop: Photographic Explorations of Microbial Life*, and leave with new perspectives.

Special Event. Regular museum admission rates apply. HMNH Harvard Museum of Natural History, 26 Oxford Street ⓘ



Tuesday, November 14, 6:00 pm

## Egypt's Old Kingdom

### The Latest Discoveries at Abusir South

Miroslav Bárta, Professor, Czech Institute of Egyptology



Abusir, the “Place of Osiris,” is a necropolis (burial site) near the Old Kingdom’s city of Memphis, known for its pyramids and sun temples. In this lecture, Miroslav Bárta will provide a comprehensive look at the latest archaeological discoveries at Abusir, dating from different periods of the Old Kingdom (2700–2200 BCE). These individual discoveries shed new light on general processes that led to the rise and eventual decline of the Old Kingdom, the first territorial state in human history.

Lecture. Free and open to the public. **HSM**  
 Visit website for event details:  
[www.semiticmuseum.fas.harvard.edu](http://www.semiticmuseum.fas.harvard.edu)

Wednesday, November 15, 6:00 pm

## Designing Life

### Early Experiments in Synthetic Biology

Sophia Roosth, Frederick S. Danziger Associate Professor in the History of Science  
 Harvard University



Synthetic biologists combine biology and engineering to design (or re-design) biological entities or living systems. The work of these scientists could have many potential applications in the medical, energy, and environmental sectors, but the field remains controversial because of ethical and biosecurity concerns. Based on her research with MIT scientists working to model and engineer viruses in the early 2000s, Sophia Roosth will discuss how synthetic biologists think about themselves and their power to “evolve” life, putting their perspectives in the context of the American political discourse over creation and intelligent design.

Lecture. Free and open to the public. **CHSI**  
 Visit website for event details: [www.chsi.harvard.edu](http://www.chsi.harvard.edu)

Tuesday, November 28, 6:00 pm

## The Juno Mission to Jupiter

### Unraveling the Secrets of a Giant Planet

Jeremy Bloxham, Mallinckrodt Professor of Geophysics,  
 Department of Earth and Planetary Sciences;  
 Dean of Science, Faculty of Arts and Sciences, Harvard University

Jupiter, the largest planet orbiting the sun, remains a profound mystery. In 2011, NASA launched the Juno mission spacecraft to explore the composition, inner structure, origin, and evolution of this giant planet. In July 2016, Juno entered Jupiter’s orbit. Jeremy Bloxham, co-investigator on the Juno mission, will draw on his role in studying Jupiter’s magnetic field and discuss why learning about Jupiter is so relevant to understanding the early history of our solar system and the conditions in which Earth was born.

Lecture. Free and open to the public. **HMNH/CHSI**  
 Geological Lecture Hall, 24 Oxford Street



Thursday, November 30, 6:00 pm

## “Let the Indian Paint His Own Picture”

### Alice Fletcher and Cultural Representation Paradoxes

Robert Baron, Director, Folk Arts Program, New York State Council on the Arts

Pioneering Peabody anthropologist Alice Fletcher researched and advocated for Native Americans at a time of massive threats to their cultures. Her approaches to advocacy prefigured by a century the dialogic turn that brought about joint creation of cultural representations by anthropologists and the communities they study. She supported Native rights, but also promoted a now-discredited “civilization” agenda. Robert Baron will compare Fletcher’s approaches to those of contemporary public folklorists who equip communities to research and present their own traditions. His lecture will explore how scholars can best share authority with communities and facilitate cultural self-determination.

Lecture. Free and open to the public. **PMAE**  
 Geological Lecture Hall, 24 Oxford Street

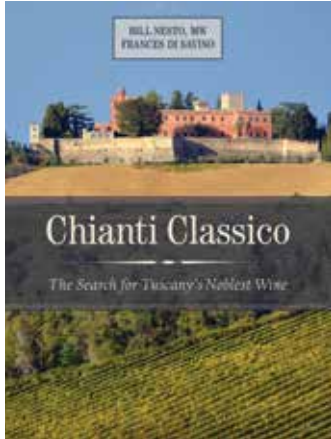


Friday, December 1, 6:00 pm

## The Search for the True Chianti

Bill Nesto, Master of Wine; Co-Founder, Wine Studies Program, Metropolitan College, Boston University; Senior Lecturer, Metropolitan College and School of Hospitality Administration, Boston University

Frances Di Savino, Attorney and Author



For most of the twentieth century, the name Chianti brought to mind a generic Italian red table wine in a straw-covered flask, rather than evoking the storied wine region in the heart of Tuscany. Bill Nesto and Frances Di Savino, co-authors of *Chianti Classico: The Search for Tuscany's Noblest Wine*, will share the story of their quest to discover the true Chianti. They will describe the evolution of Chianti as a wine region with historic, cultural, and geographic complexity, then guide guests through a tasting of wines from one of Chianti Classico's iconic estates.

Special Event and Book Signing. **HMNH**  
Geological Lecture Hall, 24 Oxford Street ①  
Advance tickets required: \$15 members/\$20 nonmembers  
Purchase tickets online: [www.hmnh.harvard.edu](http://www.hmnh.harvard.edu)

Tuesday, December 5, 5:00 pm

## Behind-the-Scenes HMSC Member Event (see page 20)

Wednesday, December 6, 6:00 pm

## All the World Is Here

### Anthropology on Display at the 1893 Chicago World's Fair

Ira Jacknis, Research Anthropologist, Phoebe A. Hearst Museum of Anthropology, University of California, Berkeley

The 1893 World's Columbian Exposition in Chicago was the first American fair to feature anthropology. The new discipline had its own building, supervised by Frederic Putnam, director of Harvard University's Peabody Museum. It competed, however, with another anthropology display organized by the Smithsonian Institution. Ira Jacknis will discuss how these exhibits offered competing versions of cultural reality, and he will trace anthropological display innovations that have become standard museum practice.



Lecture. Free and open to the public. **PMAE**  
Geological Lecture Hall, 24 Oxford Street ①

## FALL 2017 LECTURE SERIES

# EVOLUTION MATTERS

Thursday, September 14, 6:00 pm

## Darwin's Backyard

### How Small Experiments Led to a Big Theory

James T. Costa, Professor, Department of Biology, Western Carolina University; Executive Director, Highlands Biological Station, University of North Carolina

See page 2 for more information.

Wednesday, September 27, 6:00 pm

## Improbable Destinies

### Fate, Chance, and the Future of Evolution

Jonathan Losos, Monique and Philip Lehner Professor for the Study of Latin America; Professor of Organismic and Evolutionary Biology, Department of Organismic and Evolutionary Biology; Curator in Herpetology, Museum of Comparative Zoology, Harvard University

See page 4 for more information.

## SPECIAL ONLINE EXHIBIT

Goes live on September 1

<http://islands.hmnh.harvard.edu>

## Islands

### Evolving in Isolation

Islands are havens for some of the most unusual creatures on our planet. HMNH's new online exhibit, *Islands: Evolving in Isolation*, unravels the mysteries of island biodiversity and evolution. Packed with examples from around the globe, this website features stories about island plants and animals, including woodpecker-like primates, flightless birds, bizarre lizards, giant pitcher plants, hissing cockroaches, Galápagos tortoises, Malagasy lemurs, Komodo Dragons from the Indonesian islands, and *Homo floresiensis*, a dwarf relative of modern humans. Full of surprises, *Islands: Evolving in Isolation* highlights some of the latest research and discoveries made by Harvard scientists.

This project was made possible through a grant from the National Science Foundation



Lecture series supported by a generous gift from Drs. Herman and Joan Suit  
HARVARD MUSEUM OF NATURAL HISTORY

# UPCOMING

## Rotten Apples

Botanical Models of Diversity and Disease

Opens Saturday, September 23. Harvard Museum of Natural History



Carried to our shores by the earliest European colonists and first planted in Boston in 1625, the apple, *Malus pumilla*, is a New England dietary icon. One of the oldest fruit trees to be domesticated, this single species now encompasses thousands of distinct varieties worldwide. Not only do these apple varieties differ in look and taste, they also vary greatly in how they respond to pests and disease. Combining historic wax models with a series of exquisitely-crafted glass models made by Rudolf Blaschka, this small, special exhibit, located in the Glass Flowers gallery, reveals the astonishing diversity of apples and the surprising beauty of the fungal and bacterial infections that afflict these and other fruits.

## Orb-Weavers

Web Masters of the Spider World

Opens Saturday, October 21. Harvard Museum of Natural History



The familiar spiral web of orb-weaving spiders is simultaneously a key evolutionary milestone, an engineering marvel, and a work of art. Surprising new research suggests that this seemingly complex design has been repurposed, and may even have been wholly reinvented in different spider groups, over 140 million years of evolution. Combining specimens from the Harvard collection, stunning photography, and multimedia technology, *Orb-Weavers: Masters of the Spider World* is a small, special exhibit in the Arthropods Gallery that will examine the evolution of the orb web and explore how capture strategies used by its arachnid builders have shaped web design.

This project was made possible through a grant from the National Science Foundation



# EXHIBITS

## From Stone to Silicone

Recasting Mesopotamian Wall Carvings

Opens Saturday, December 16. Harvard Semitic Museum

The Harvard Semitic Museum is reimagining its grand third-floor atrium gallery, featuring the arts of ancient Mesopotamia (present-day Iraq). This first installment showcases newly fabricated casts from the ancient scenes that once adorned Mesopotamian palace walls. Meticulously created by museum curators and Harvard students, these relief sculptures show how the ancient kings commemorated their military triumphs and civic achievements. For ancient audiences, these scenes presented powerful royal propaganda. For modern audiences, they reveal great artistry and important glimpses into life in the ancient Near East.



This exhibition is supported by a grant provided by the Massachusetts Cultural Facilities Fund, a program of the Commonwealth of Massachusetts administered through a collaborative arrangement between MassDevelopment and the Massachusetts Cultural Council.



## MUSEUM CLASSES

### KIDS' DRAWING CLASSES

All drawing classes taught by Erica Beade

#### Capturing Skeletons with Pencil and Paper Ages 9-13

Saturday, October 28, 2:00-3:30 pm  
\$25 members/\$35 nonmembers HMNH

#### Capturing Birds of Prey with Pencil and Paper Ages 9-13

Saturday, November 4, 2:00-3:30 pm  
\$25 members/\$35 nonmembers HMNH

#### Capturing Minerals with Pencil and Paper Ages 9-13

Saturday, December 2, 2:00-3:30 pm  
\$25 members/\$35 nonmembers HMNH

### ADULT CLASSES

#### Drawing the Animals A Four-Week Course

Erica Beade, Artist and Educator

Four Saturdays: October 7, 14, 21, and 28  
9:30-11:30 am  
\$110 members/\$130 nonmembers HMNH

#### Drawing Birds in Colored Pencil

Erica Beade, Artist and Educator

Saturday, November 4, 9:30-11:30 am  
\$40 members/\$55 nonmembers HMNH

#### Consider the Lizard

Joe Martinez and Sofia Prado-Irwin,  
Instructors

Saturday, December 9, 9:30 am-12:00 pm  
\$45 members/\$55 nonmembers HMNH

### FAMILY CLASSES

A learning experience for adults and children to share. Designed for families with elementary-age children, with at least one adult required. Fees are per person.

#### Exploring Science Together

**Owls!** Ages 5+

Amy Gunzelmann, HMNH Science Educator

Saturday, September 16, 10:30 am-12:00 pm  
\$10 members/\$20 nonmembers HMNH

#### Invisible Life

Exploring the World through Microscopes

Ages 5+

Wendy Derjue-Holzer, HMNH Science Educator  
Scott Chimileski, Instructor

Sunday, October 1, 1:30-3:00 pm  
Collection of Historical Scientific Instruments  
\$10 members/\$20 nonmembers HMNH

#### Exploring Science Together

**The Ice Age!** Ages 5+

Amy Gunzelmann, HMNH Science Educator

Saturday, November 18, 10:30 am-12:00 pm  
\$10 members/\$20 nonmembers HMNH

#### Speed, Sweat, and Stamina

**How Animals Are Adapted to Run** Ages 8+

Amy Gunzelmann, HMNH Science Educator  
W. Eamon Callison, Kate Carter, and  
Heather Dingwall, Instructors

Saturday, December 9, 1:30-3:30 pm  
\$10 members/\$20 nonmembers HMNH

All classes are held at 26 Oxford Street unless otherwise indicated. Advance registration is required. For easy online registration, visit: [www.hmsc.harvard.edu/education](http://www.hmsc.harvard.edu/education)

## LEARN MORE ABOUT THE MUSEUMS

The Harvard Museums of Science & Culture offer opportunities for visitors to learn more about current exhibitions, the thousands of artifacts and specimens on display, and the Harvard collections from which they draw. Sign up for a museum/gallery tour or take a self-guided tour using a mobile gallery guide.



### Guided Tours

#### GLASS FLOWERS TOURS

Groups can reserve docent-led tours of the famous Blaschka *Glass Flowers* and *Sea Creatures in Glass* exhibits on Tuesday and Thursday afternoons. Advance registration is required. For registration, capacity, and fee information, visit [www.hmnh.harvard.edu/group-visits](http://www.hmnh.harvard.edu/group-visits)

#### HARVARD SEMITIC MUSEUM TOURS

The museum offers free half-hour lunchtime tours each month, and individualized group tours can also be scheduled. Go to the "Visit" page at [www.semiticmuseum.fas.harvard.edu](http://www.semiticmuseum.fas.harvard.edu) for more information.

#### PEABODY MUSEUM HIGHLIGHTS TOURS

The museum offers drop-in tours designed for adult visitors, led by Harvard student guides on Fridays, Saturdays, and Sundays during the academic year. Free with regular admission, tours last 45 minutes and encourage audience discussion. Group tours may also be scheduled for other times. See website for schedule, reservation, and tour topic information:

[www.peabody.harvard.edu/visit](http://www.peabody.harvard.edu/visit)

### Mobile Gallery Guides

Enhance your visit with additional multimedia for your cell phone or tablet.

*From the Nile to the Euphrates: Creating the Harvard Semitic Museum* **HSM**

*Digging Veritas: Archaeology and History of the Indian College and Student Life at Colonial Harvard* **PMAE**



# One membership. Four museums. Countless opportunities!

Membership in the Harvard Museums of Science & Culture opens the doors to four museums and provides special access and opportunities. In return, you'll support everything we do, from free public lectures and educational outreach to new exhibitions.

## Member Benefits

HMSC members enjoy great benefits that include unlimited admission to all four HMSC museums, Harvard Art Museums, and science centers worldwide through the ASTC Travel Passport Program, plus member discounts on museum classes and in our museum shops. Access to several Harvard libraries, free parking, and guest passes are included at different membership levels.

## Exclusive Events

Members receive invitations to exclusive programs, including behind-the-scenes tours where they can glimpse items from Harvard's vast museum collections and talk with curators about their work. Recent events have given members access to artifacts of the Peabody Museum and rarely seen gold and jewels from the Mineralogical and Geological Museum.

## Annual Members Night at the Harvard Museum of Natural History

Tuesday, December 5, 5:00 pm • Complimentary Garage Parking

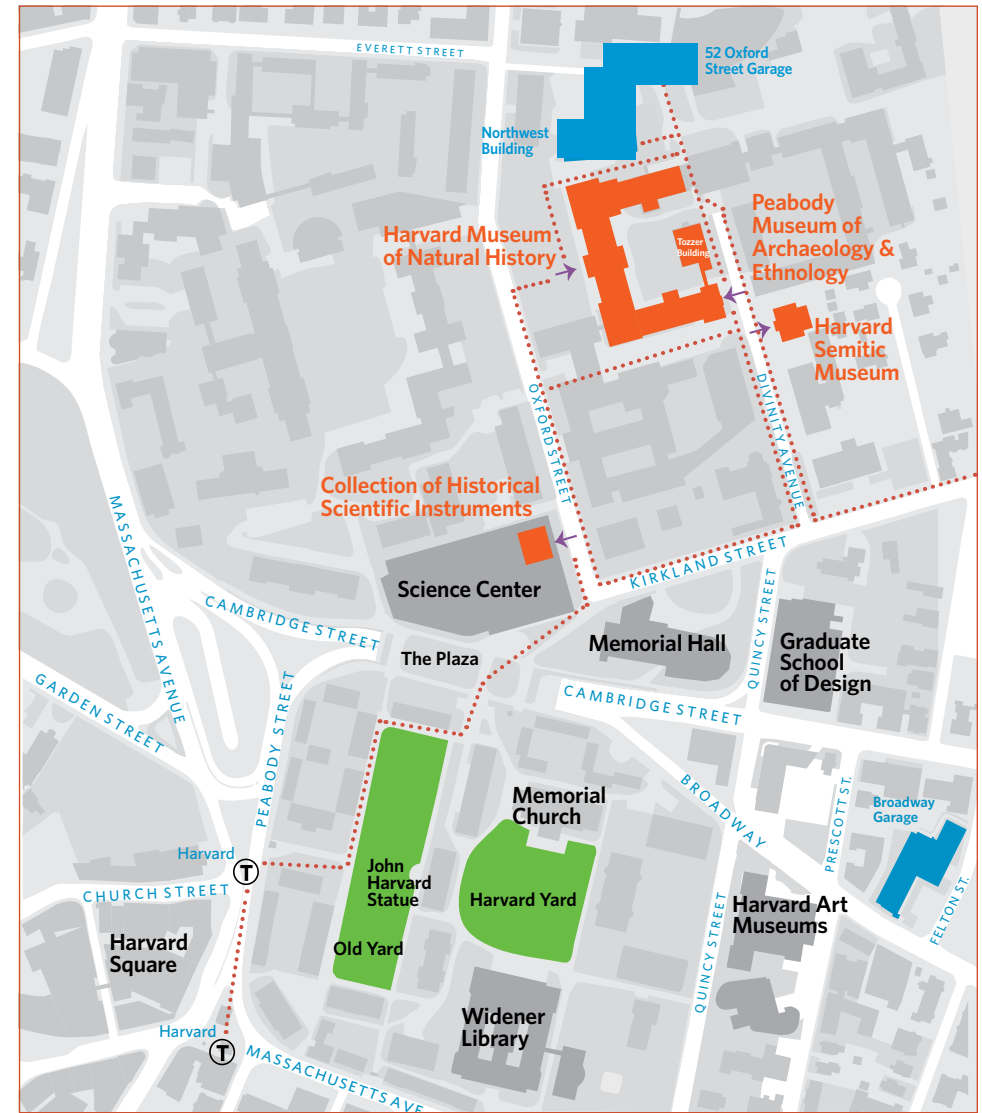
Come mingle with fellow members at this behind-the-scenes member event. Explore the exhibits after hours, enjoy seasonal refreshments, and use your generous holiday member discount on unique gifts from the Shop at HMNH.

This year's event will feature special behind-the-scenes tours of the Museum of Comparative Zoology's vertebrate paleontology collections. Members will see MCZ's new state-of-the-art storage facility, view rare fossils, and hear museum staff discuss their work with these collections.

Registration for this event opens November 1. Not yet a member? Join today so you don't miss this opportunity!



CONTACT THE MEMBERSHIP/DEVELOPMENT OFFICE  
visit: [www.hmsc.harvard.edu/membership](http://www.hmsc.harvard.edu/membership)  
email: [members@hmsc.harvard.edu](mailto:members@hmsc.harvard.edu) • call: 617-496-6972



Page 1: bottom: Photo by Emma Mullen

Page 2 top: Photo by James Costa

Page 2 bottom: Photo by Raymond Ostertag

Page 3 bottom: Courtesy of Museo Tumbas Reales de Sipán

Page 5 top: Shutterstock by Camdiluv

Page 5 bottom: Courtesy of Harvard-Smithsonian Center for Astrophysics

Page 6 top left and right: Photos by Tony Rinaldo

Page 6 bottom right: Photo by Harrison Becker

Page 7 top: Peabody Museum of Archaeology & Ethnology, PM 2004.29.6041. © President and Fellows of Harvard College

Page 8 top right: Shutterstock by Kidrigin

Page 9 top: Photo by Scott Chimileski

Page 9 bottom: Photos courtesy of Wallace Chan

Page 10 top: Shutterstock by Vasmila

Page 10 bottom: Courtesy of Brian Farrell

Page 11 bottom: Photos by Scott Chimileski

Page 12 top: Courtesy of Miroslav Bárta

Page 12 bottom: "Vanitas" by Suzanne-Anker

Page 13 top: Courtesy of NASA

Page 13 bottom: Peabody Museum of Archaeology & Ethnology, PM 2004.29.6041. © President and Fellows of Harvard College

Page 14 bottom: Courtesy of Smithsonian Institution Archives

Page 15: background: Shutterstock by Jolanta Wojcicka

Page 16 top left and right: Models 822 and 813, Rudolf Blaschka. The Ware Collection of Blaschka Glass Models of Plants, Harvard University Herbaria

Page 16 bottom: Courtesy of Gustavo Hormiga

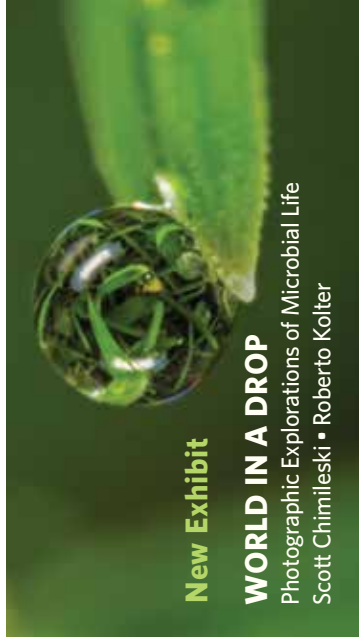
Page 17: Nimrud North West Palace Reliefs, Harvard Semitic Museum

Page 18: Shutterstock by mirabile

**HM**SC HARVARD MUSEUMS of SCIENCE & CULTURE

Harvard University

26 Oxford Street, Cambridge, MA 02138



**New Exhibit**

**WORLD IN A DROP**

Photographic Explorations of Microbial Life

Scott Chimileski • Roberto Kolter