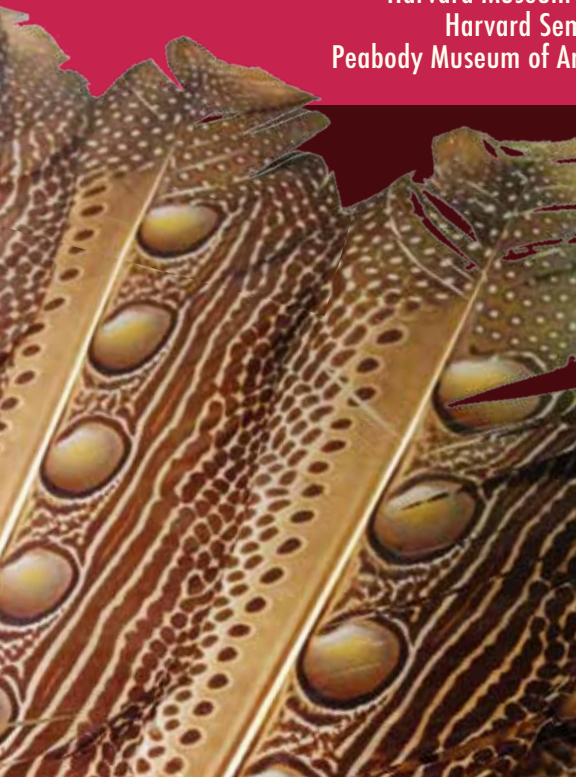


HARVARD MUSEUMS OF SCIENCE & CULTURE

SPRING 2017 PROGRAMS • EXHIBITS • CLASSES

Collection of Historical Scientific Instruments
Harvard Museum of Natural History
Harvard Semitic Museum
Peabody Museum of Archaeology & Ethnology





One world. Four museums.

Museums create space for lifelong learning, deep insights, and simple wonder. They connect people across time, distance, and cultures, encouraging them to hear different voices and try on different perspectives. In an age when an overload of information may lead to erroneous or surface understanding, museums serve as oases for deep contemplation, thoughtful curiosity, and engagement with knowledge and concepts. They are trusted resources that inspire sound, critical thinking.

HMSC provides access to some of the most significant collections anywhere in the world, representing both the beauty and marvel of the planet and the customs and ingenuity of civilizations across time. Our museums draw on those collections to celebrate the natural world, scientific innovation, and human cultural history—but also to tackle important issues.

Embedded in the histories of all the HMSC museums are links to current research and contemporary topics. The Peabody Museum’s 150th anniversary is central to this year’s programming. This April we are pleased to open a new permanent exhibition, *All the World Is Here*, which explores the early history of the Peabody and the birth of American anthropology. We hope you will join us for this—and for all the HMSC exhibits and programs.

Come see the world, in four museums.

- Collection of Historical Scientific Instruments
- Harvard Museum of Natural History
- Harvard Semitic Museum
- Peabody Museum of Archaeology & Ethnology



TABLE OF CONTENTS

Peabody 150 th	2
Programs	3-18
Exhibits	19-21
Museum Tours	22
Classes	23
Membership	24

Free event parking is available at the 52 Oxford Street Garage for all events marked with a Ⓟ (not applicable to classes or exhibitions).

Front Cover Images (clockwise from top left)



Painted fragment (ostrakon) of Osiris, the god of resurrection
An ostrakon is an inscription or painting made on pottery sherds. Limestone and pigment. Egypt (Thebes, Valley of the Kings). Dyn. 20, circa 1190-1075 BC. Gift of Theodore M. Davis. Harvard Semitic Museum 1902.50.6



Plaster model of head with brain exposed
This painted plaster head was part of a collection of heads that Harvard’s new Psychological Laboratory showcased in the Anthropology Building of the 1893 World’s Columbian Exposition in Chicago. Such models were likely cast from deceased people, whose skulls were partially removed to enable the form of their brains to be measured and compared. Made in Dublin by L. Casciani and Son, a firm known for its church statuary. Collection of Historical Scientific Instruments WJ0167



Hopewell mica face effigy
Turner Mound Group, Ohio. 200 BC-AD 500. Native peoples of Ohio crafted delicately cut effigies, such as this human face, from sheets of mica during the Hopewell period. This effigy was recovered during archaeological investigations at Turner Mound Group conducted by Frederic Ward Putnam (one of the museum’s earliest directors) and Charles L. Metz, and was exhibited at the 1893 World’s Columbian Exposition in Chicago. Peabody Museum of Archaeology & Ethnology 82-35-10/30002.1 (digital file 60743300)



Argus Pheasant (*Argusianus argus*)
The great argus can be found on the Malay Peninsula, including south Myanmar, peninsular and southwest Thailand, and Peninsular Malaysia, as well as in Sumatra, Indonesia. Both sexes show a preference for intact forest with large trees and an open understory. Museum of Comparative Zoology, Harvard University 25579

PEABODY MUSEUM *of* ARCHAEOLOGY & ETHNOLOGY

150th Anniversary Year

Founded in October 1866, the Peabody Museum of Archaeology & Ethnology is one of the oldest museums in the world devoted to anthropology and is known for its remarkably comprehensive collections of cultural objects and for its active collaborations with diverse communities. This spring we continue the Peabody Museum's yearlong focus on its early history and its continuing relevance to modern society.



Anniversary Events • Spring 2017

April 22, Exhibition Opening (see page 21)

All the World Is Here

Harvard's Peabody Museum and the Invention of American Anthropology

April 30 (see page 14)

The Magic of Java

May 4 (see page 15)

Curiouser and Curiouser

Why Twenty-First-Century Wonderlands Need Anthropology Museums More Than Ever

RACE, REPRESENTATION, AND MUSEUMS LECTURE SERIES

A lecture series on the intersections of museums and race

February 23 (see page 4)

Sacred Nation

Chinese Museums and the Legacy of Empire

March 7 (see page 6)

Marx, Freud, and the Gods

Black People Make European Social Theory and the Real-Life "Fetish"

March 21 (see page 7)

Fabricating the Authentic

Presenting Anthropology at the 1893 World's Columbian Exposition

March 27 (see page 8)

Pitldown Man, the Missing Link

Exposing the Motives and Methods behind a 100-Year-Old Hoax

April 6 (see page 10)

Anxieties about Race in Egyptology and Egyptomania, 1890-1960

April 25 (see page 13)

Seeing and Seeing through Museum Exhibits

Lessons from Cape Town and Washington, D.C.

Saturday, February 11, 10:00 am-4:00 pm

I ♥ Science

Explore the marvelous science of our natural world in this annual daylong festival featuring dozens of activities. Dig into the soil to see what's there, watch live marine creatures, design a LEGO® brick home for an insect, investigate fossils, explore the Glass Flowers, and more! Awaken your love of science with activities led by Harvard scientists, graduate students, and enthusiastic explorers. Hear short talks on current research at Harvard. I ♥ Science has something for everyone and is appropriate for children and adults of all ages.

Special event. Regular museum admission rates apply. **HMNH**

Harvard Museum of Natural History, 26 Oxford Street ©



Thursday, February 16, 6:00 pm

Symbiosis and the Evolution of Life in the Ocean

Peter R. Girguis, Professor of Organismic and Evolutionary Biology, Department of Organismic and Evolutionary Biology, Harvard University; Adjunct Research Engineer, Monterey Bay Aquarium Research Institute

The discovery of microscopic life forms in the seventeenth century led to humankind's understanding of microbes as the biochemical innovators of our world. Microbes have evolved exotic metabolisms that enable them to live in seemingly inhospitable places, and they inhabit nearly every animal and plant on Earth. Peter Girguis will lead a virtual tour of ocean microbial life and discuss how marine microbes influence the evolution of all life on Earth, even playing a role in the geological and geochemical composition of our planet.

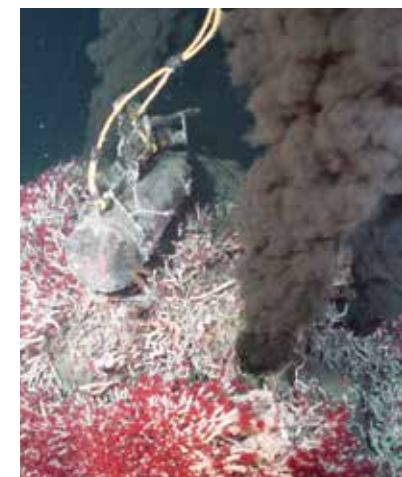
Evolution Matters Lecture Series

Free and open to the public. **HMNH**

Visit website for location: www.hmnh.harvard.edu ©

Related exhibition: *Marine Life* in the Putnam Family Gallery, at the Harvard Museum of Natural History

Series supported by a generous gift from Drs. Herman and Joan Suit



Wednesday, February 22, 6:00 pm

Next of Kin

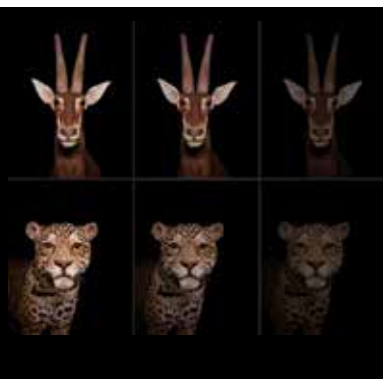
Seeing Extinction through the Artist's Lens

Carrie Lambert-Beatty, Professor of Visual and Environmental Studies and History of Art and Architecture; Director of Graduate Studies, Film and Visual Studies, Harvard University

Christina Seely, Artist and Assistant Professor of Studio Art, Dartmouth College

Ross Virginia, Myers Family Professor of Environmental Science; Director, Institute of Arctic Studies, The John Sloan Dickey Center for International Understanding, Dartmouth College

Moderated by Edward Morris, Artist; Professor of Practice, Department of Transmedia; Co-Director of The Canary Lab, Syracuse University; Co-Director of The Canary Project



How do we understand complex ecological issues such as climate change and species extinction? What part do the arts play in this understanding, compared to—or in collaboration with—the sciences? What is the role of empathy or belief, as opposed to knowledge? This interdisciplinary panel will explore these questions within the context of the new exhibition *Next of Kin: Seeing Extinction through the Artist's Lens*, which uses special photography techniques, lighting and sound design, and specimens of extinct or endangered animals from Harvard collections to evoke empathy with our “next of kin.”

Panel Discussion. Free and open to the public. **HMNH**
Geological Lecture Hall, 24 Oxford Street ①

Related exhibition: *Next of Kin: Seeing Extinction through the Artist's Lens*, at the Harvard Museum of Natural History

Presented in collaboration with the Department of Visual and Environmental Studies, Harvard University

Thursday, February 23, 6:00 pm

Sacred Nation

Chinese Museums and the Legacy of Empire

Magnus Fiskesjö, Associate Professor, Department of Anthropology, Cornell University



The official Chinese view of China's history and national identity has been transformed in recent decades from a tale of revolutionary class struggle into a story of ancient and unbroken national and imperial glory. This shift can be discerned in both new and restored Chinese museums and memorial sites commemorating recent and past heroes. Magnus Fiskesjö will discuss the current boom in China's “culture industry” and what it tells us about changes in Chinese conceptions of national and cultural identity.

Race, Representation, and Museums Lecture Series

Free and open to the public. **PMAE**
Geological Lecture Hall, 24 Oxford Street ①

Presented in collaboration with the Departments of Anthropology and Human Evolutionary Biology, Harvard University

Thursday, March 2, 6:00 pm

Tiny Conspiracies

Cell-to-Cell Communication in Bacteria

Bonnie L. Bassler, Professor and Chair of Molecular Biology, Howard Hughes Medical Institute; Investigator and Squibb Professor in Molecular Biology, Princeton University

Harmful bacteria have the capacity to kill humans, animals, and plants, while beneficial bacteria play a vital role in keeping them alive. How do these small organisms accomplish such big tasks? Working in groups, bacteria are able to communicate using a cell-to-cell chemical communication process called “quorum sensing,” enabling them to synchronize behavior on a population-wide scale. Bassler will discuss how quorum sensing works and describe the cutting-edge medical therapies being developed to combat bacterial diseases by interfering with this communication process.



Prather Lecture

Free and open to the public. **HMNH**
Geological Lecture Hall, 24 Oxford Street ①

Presented in collaboration with the Departments of Organismic and Evolutionary Biology and Molecular and Cellular Biology, Harvard University

Monday, March 6, 6:00 pm

Biology of Consciousness

William James to Richard Schultes and Beyond

David Carrasco, Neil L. Rudenstine Professor of the Study of Latin America, Harvard Divinity School and the Department of Anthropology, Harvard University

Brian D. Farrell, Director, David Rockefeller Center for Latin American Studies; Professor of Biology, Department of Organismic and Evolutionary Biology, Harvard University

How do biological and cultural forces shape the development of consciousness? In this interdisciplinary dialogue, Brian Farrell and David Carrasco will draw on the work of two earlier Harvard professors—psychologist William James and ethnobotanist Richard Evans Schultes—to consider whether culture is fundamentally biological, or whether the biology of consciousness is shaped by experience. The speakers will reflect on James' “religious propensities” and Schultes' study of psychoactive substances among Indigenous peoples in exploring the biological and cultural doors of perception.

Lecture. Free and open to the public. **HMNH PMAE**
Geological Lecture Hall, 24 Oxford Street ①
Presented in collaboration with the David Rockefeller Center for Latin American Studies, Harvard University



Tuesday, March 7, 6:00 pm

Marx, Freud, and the Gods Black People Make

European Social Theory and the Real-Life “Fetish”

J. Lorand Matory, Lawrence Richardson Professor of Cultural Anthropology and Director, Sacred Arts of the Black Atlantic Project, Duke University



Since the early-modern encounter between African and European merchants on the Guinea Coast, the term “fetish” has invoked African gods as a metaphor for what European social critics believe to be disorders in European thought. Yet African gods have a social logic of their own that is no less reasonable than the different, but equally socially positioned, theories of Marx and Freud. J. Lorand Matory will offer a novel perspective on the social roots of these tandem African and European understandings of collective action, illuminating the relationship of European social theory to the racism suffered by Africans and assimilated Jews alike.

Race, Representation, and Museums Lecture Series

Free and open to the public. PMAE

Geological Lecture Hall, 24 Oxford Street ©

Presented in collaboration with the Departments of Anthropology and Human Evolutionary Biology, Harvard University

Wednesday, March 15, 6:00 pm

Tiny Cells, Global Impact

A Journey of Discovery with a Microbe from the Sea

Sallie W. Chisholm, Institute Professor, Department of Biology, Massachusetts Institute of Technology



Phytoplankton—microscopic photosynthetic cells—form the base of ocean food webs. They are responsible for half the photosynthesis on Earth and thus play a central role in our planet’s metabolism. Discovered only three decades ago, *Prochlorococcus* is the smallest and most abundant member of the phytoplankton, manufacturing billions of tons of living biomass each year. Sallie Chisholm will discuss how this tiny microbe has helped scientists to understand the forces that shape ecosystems and to appreciate their genetic diversity.

Evolution Matters Lecture Series

Free and open to the public. HMNH

Geological Lecture Hall, 24 Oxford Street ©

Series supported by a generous gift from Drs. Herman and Joan Suit

Tuesday, March 21, 6:00 pm

Fabricating the Authentic

Presenting Anthropology at the 1893 World’s Columbian Exposition

Lee D. Baker, Dean of Academic Affairs, Trinity College of Arts and Sciences; Associate Vice Provost for Undergraduate Education; Mrs. A. Hehmeyer Professor of Cultural Anthropology, Duke University

Frederic Ward Putnam, one of the Peabody Museum’s earliest directors, played a key role in establishing anthropology as a scholarly field. He was also a driving force behind the 1893 World’s Columbian Exposition in Chicago, where he aimed to present authentic exhibits about Indigenous cultures. His vision, however, was compromised by both the Exposition’s administration, which framed the exhibition of Indigenous people as entertaining freak shows, and by “friends of the Indian,” who wanted to show their “progress” toward civilization. Lee Baker will discuss how anthropology became publicly mired in racial politics and the contested arena of Indigenous representation.

Race, Representation, and Museums Lecture Series

Free and open to the public. PMAE

Geological Lecture Hall, 24 Oxford Street ©

Presented in collaboration with the Departments of Anthropology and Human Evolutionary Biology, Harvard University



Thursday, March 23, 6:00 pm

Networking the Ocean

Using Technology to Study Real-Time, In Situ Marine Processes

John Delaney, Professor of Oceanography and Jerome M. Paros Endowed Chair in Sensor Networks; Principal Investigator and Director, Regional Scale Nodes Program, University of Washington

Studying complex deep-sea processes is a challenging task, but a new network of robotic sensors installed in some of the most remote ocean areas promises to revolutionize ocean science and education. John Delaney will discuss the development of this network and how it enables real-time interdisciplinary research on once-inaccessible natural phenomena in the world’s oceans, such as migration patterns, erupting volcanoes, undersea earthquakes, and storms. Understanding these environmental phenomena makes it possible to analyze their impact on the evolution of marine organisms.

Evolution Matters Lecture Series

Free and open to the public. HMNH

Geological Lecture Hall, 24 Oxford Street ©

Related exhibition: *Marine Life* in the Putnam Family Gallery, at the Harvard Museum of Natural History

Series supported by a generous gift from Drs. Herman and Joan Suit



Monday, March 27, 6:00 pm

Pitdown Man, the Missing Link

Exposing the Motives and Methods behind a 100-Year-Old Hoax

Christopher Dean, Emeritus Professor of Anatomy, Division of Biosciences; Professorial Research Associate, Department of Cell and Developmental Biology, University College London



In 1912, British paleontologist Arthur Smith Woodward and amateur antiquarian Charles Dawson announced the discovery of a hominin in Sussex, England, thought to be a possible “missing link” between apes and humans. Referred to as Pitdown Man, the find made headlines, but ultimately turned out to be one of the most infamous scientific frauds of all time. Christopher Dean will discuss the history of the hoax, the *modus operandi* of the forger, and why Pitdown Man continues to be studied a century later.

Race, Representation, and Museums Lecture Series

Free and open to the public. PMAE HMNH

Geological Lecture Hall, 24 Oxford Street ⓘ

Presented in collaboration with the Departments of Anthropology and Human Evolutionary Biology, Harvard University

Tuesday, March 28, 6:00 pm

W. E. B. Du Bois, Education, and Archaeology in Egypt

An Overlooked Chapter in the History of Egyptology

Vanessa Davies, Visiting Scholar Researcher, Phoebe A. Hearst Museum of Anthropology, University of California, Berkeley



Recently discovered correspondence from the early twentieth century has shed light on a disagreement between W. E. B. Du Bois and W. M. F. Petrie, the developer of Egyptian archaeology as a scientific discipline. Their letters focused on the education of people of African descent in America and of Egyptians in Egypt and highlighted the widely divergent views and educational backgrounds of the two men. Vanessa Davies will discuss how issues raised in the Du Bois/Petrie correspondence relate to contemporary concerns about the purpose of education in the twenty-first century.

Lecture. Free and open to the public. HSM

Visit website for location: www.semiticmuseum.fas.harvard.edu ⓘ

Presented with support from the Marcella Tilles Memorial Fund

Thursday, March 30

Harvard Museums' Seminar on Innovative Curatorial Practice

Okwui Enwezor, Director, Haus der Kunst, Munich, Germany, and Artistic Director, 56th Venice Biennale

John Akomfrah, OBE, Artist and Filmmaker



The Harvard Museums' fourth annual Curatorial Innovation program will feature an evening with Okwui Enwezor and John Akomfrah, in which they will explore contemporary exhibition making and the future of museum display. Particular attention will be paid to exhibits that cross disciplines and link the worlds of art and science.

Special event. Free and open to the public. HMSC

Visit website for event details: www.hmsc.harvard.edu ⓘ

Co-sponsored by Harvard Museums of Science & Culture, Harvard Art Museums, and Harvard University Committee on the Arts

Tuesday, April 4, 6:00 pm

Lemurs

Endangered Gardeners of Madagascar's Rainforests

Onja Razafindratsima, 2016–2017 Sarah and Daniel Hrdy Visiting Fellow in Conservation Biology, Department of Organismic and Evolutionary Biology, Harvard University

Many plant species in Madagascar's highly diverse forests have fruits that are eaten by lemurs, a primate group native to Madagascar. Lemurs disperse the seeds of these plants throughout the forest with their scat. This seed dispersal process plays a crucial role in the survival of the island's plant species, the maintenance of high plant diversity, and the integrity of the forest ecosystem. Onja Razafindratsima will discuss the role and impact of lemur seed dispersal on plants in Madagascar's rainforests on multiple levels.



Lecture. Free and open to the public. HMNH

Geological Lecture Hall, 24 Oxford Street ⓘ

Thursday, April 6, 6:00 pm

Anxieties about Race in Egyptology and Egyptomania, 1890-1960

Donald Reid, Professor Emeritus, Department of History, Georgia State University; Affiliate Professor, Department of Near Eastern Languages and Civilization, University of Washington



Despite ideals of scientific and scholarly objectivity, both Egyptologists and non-specialists have often projected their own racial anxieties onto ancient Egypt. Recurrent attempts to prove that the ancient Egyptians were white or black, for example, reveal more about modern societies than about ancient Egypt. Donald Reid will discuss the history of how such debates have played out among Western and modern Egyptian scholars, artists, and writers, and how interpretations of ancient Egypt are intertwined with personal values.

Race, Representation, and Museums Lecture Series

Free and open to the public. **HSM PMAE**

Geological Lecture Hall, 24 Oxford Street ①

Presented in collaboration with the Departments of Anthropology and Human Evolutionary Biology, Harvard University

Tuesday, April 11, 6:00 pm

Museums in Tanzania

History, Transformation, and Impact

Audax Z. P. Mabulla, Director General, The National Museum of Tanzania



Tanzania has a record of more than three million years of human history and diversity, including fossil remains, footprints, and stone toolkits of early humans and hominin ancestors, from sites such as Laetoli, Olduvai Gorge, and Peninj. The National Museum of Tanzania supports the preservation of the country's rich natural and cultural diversity through scientific research, education, and public outreach programs. Audax Mabulla will discuss the history of the museum and the innovative policy changes it is implementing to promote an understanding of Tanzania's heritage, while also contributing to building peace, unity, and democracy in the nation.

2017 Hallam L. Movius, Jr. Lecture and Reception

Free and open to the public. **PMAE**

Geological Lecture Hall, 24 Oxford Street ①

Wednesday, April 19, 10:00 am-12:00 pm

Meet a Scientist at the Harvard Museum of Natural History

Come see the world through the eyes of a scientist and explore what research reveals about life and our planet. Graduate students from the Departments of Organismic and Evolutionary Biology, Human Evolutionary Biology, and Earth and Planetary Sciences at Harvard University will share their research and lead hands-on activities in the museum galleries. All activities will be designed to actively engage families in learning more about science and our natural world.

Special event. Regular museum admission rates apply. **HMNH**

Harvard Museum of Natural History, 26 Oxford Street

Presented in collaboration with the Cambridge Science Festival



Thursday, April 20, 6:00 pm

Ocean Evolution Today

The Impact of Human Activities on the Ecology and Evolution of Marine Organisms

Samantha B. Joye, Athletic Association Professor in Arts and Sciences, Department of Marine Sciences, University of Georgia

Bruce H. Robison, Senior Scientist and Midwater Ecologist, Monterey Bay Aquarium Research Institute

Randi Dawn Rotjan, Research Assistant Professor, Department of Biology, Boston University Marine Program

Moderated by Peter R. Girguis, Professor of Organismic and Evolutionary Biology, Harvard University and Adjunct Research Engineer, Monterey Bay Aquarium Research Institute

Human activities are causing changes in the ocean that could influence the evolution of its organisms. In this panel discussion, three marine scientists with expertise in chemistry, microbiology, geology, marine conservation, and the use of remotely operated vehicles to study deep-sea organisms will discuss the impact of human activity on ocean and coastal ecosystems and answer questions about actions that individuals and organizations can take to support the health of the ocean.

Evolution Matters Lecture Series

Panel Discussion. Free and open to the public. **HMNH**

Visit website for location: www.hmnh.harvard.edu ①

Related exhibition: *Marine Life* in the Putnam Family Gallery, at the Harvard Museum of Natural History

Presented in collaboration with the Cambridge Science Festival

Series supported by a generous gift from Drs. Herman and Joan Suit



Friday, April 21, 7:00 pm

Music and the Bilingual Brain

Ariel Mitnick, Rainer Crosett, and Alan Toda-Ambaras, Project LENS
Gigi Luk, Associate Professor of Education, Harvard Graduate School of Education



Project LENS is a Boston-based performance collaborative that seeks to reveal connections between music and other topics. The group's diverse studies and passion for classical music have inspired them to start a conversation about the way music relates to topics as eclectic as evolution, law, and birdsong. For this event, Project LENS will join HGSE professor Gigi Luk to explore how the cognitive effects of bilingualism might relate to the benefits of learning music "as another language," studying multiple instruments, or developing multiple musical styles.

Special Event. Free and open to the public. **HMNH**
Visit website for location: www.hmnh.harvard.edu
Presented in collaboration with the Cambridge Science Festival

Sunday, April 23, 10:00 am-12:00 pm

The Natural History of Your Favorite Foods

At last you get to play with your food! Meet archaeologists and use your observation skills to compare ancient wild plant and animal species to modern ones. Taste, process, and handle new and old world ingredients from favorite foods, such as pizza, french fries, and chocolate cake, and learn how they became staples of the American diet we enjoy today.

Family drop-in activity. Free and open to the public. **PMAE**
Recommended for ages 9 and older
Peabody Museum of Archaeology & Ethnology, 11 Divinity Avenue
Presented in collaboration with the Cambridge Science Festival



Tuesday, April 25, 6:00 pm


Seeing and Seeing through Museum Exhibits

Lessons from Cape Town and Washington, D.C.

Corinne Kratz, Professor Emerita, Department of Anthropology and Institute of African Studies; Director, African Critical Inquiry Program, Emory University; Research Associate, Museum of International Folk Art

How do implicit understandings and assumptions about race and ethnicity become embedded in museum exhibitions? How can museums and exhibitions reproduce, challenge, or help transform those understandings and other "rhetorics of value"? Corinne Kratz will use recent exhibitions in Cape Town, South Africa, and Washington, D.C., to consider these questions, examining components such as exhibition content and design, and reviewing particular historical moments that have brought these questions to the fore.

Race, Representation, and Museums Lecture Series

Free and open to the public. **PMAE**
Geological Lecture Hall, 24 Oxford Street 
Presented in collaboration with the Departments of Anthropology and Human Evolutionary Biology, Harvard University



Wednesday, April 26, 6:00 pm

Knocking on Heaven's Door

Scaling the Universe

Lisa Randall, Frank B. Baird, Jr., Professor of Science, Department of Physics, Harvard University



How we look at things matters. Humans make sense of the world by experiencing it from different perspectives, whether understanding a detailed city map, or locating a constellation in the sky. But how do we deal with scales we cannot see? Lisa Randall will discuss how scientists think about scale when studying the cosmos—from the mysterious properties of dark matter to the depths of our universe and beyond.

Lecture and Reception. Free and open to the public. **CHSI**
Visit website for location: www.chsi.harvard.edu 
Related exhibition: *Scale: A Matter of Perspective*, an exhibition at the Collection of Historical Scientific Instruments, opens March 10
Reception sponsored by the Harvard Chapter of Sigma Xi

Sunday, April 30, 2:00 pm

The Magic of Java

Free Admission Day in Honor of the Peabody Museum's 150th Anniversary

Jody Diamond, Artist in Residence, Music Department, Harvard University, with Gamelan Si Betty



Shadow theater and live music, popular highlights of the Javanese village at the 1893 World's Columbian Exposition, come to the galleries of the Peabody Museum! Enjoy a contemporary performance based on scenes from Mozart's *The Magic Flute*, featuring intricate leather puppets and the sonorous gong-chime instruments of Harvard's Javanese-style gamelan orchestra. Touch beautiful hand-painted puppets, try out the instruments, and sample coffees from the islands of Indonesia.

Special Event (all ages). Free and open to the public. **PMAE**
 Small charge for coffee tasting
 11 Divinity Avenue
 Related exhibition: *All the World Is Here: Harvard's Peabody Museum and the Invention of American Anthropology*, Peabody Museum of Archaeology & Ethnology, opens April 22

Tuesday, May 2, 6:00 pm

The Evolution and Migration of the Irish Potato Famine Pathogen

Darwin's Painfully Interesting Subject

Jean Beagle Ristaino, William Neal Reynolds Professor of Plant Pathology and Director of Emerging Plant Disease and Global Food Security, North Carolina State University



The culprit behind the nineteenth-century Irish potato famine was *Phytophthora infestans*, a fungus-like microorganism that causes the disease known as "potato late blight." New genetic tools have enabled scientists to piece together the evolution of this pathogen and the history of its outbreaks in Ireland. Jean Ristaino will discuss the latest research on *P. infestans* and describe Charles Darwin's early role in the search for durable resistance to this serious plant disease.

Lecture. Free and open to the public. **HMNH**
 Visit website for location: www.hmnh.harvard.edu ①

Wednesday, May 3, 6:00 pm

Facing Philistines

The Discovery of an Iron Age Cemetery

Adam J. Aja, Assistant Curator of Collections, Harvard Semitic Museum; Assistant Director, Leon Levy Expedition to Ashkelon; Chief Stratigrapher, Tel Shimron Excavations

Archaeological excavations at Philistine settlements have revealed myriad details about the daily life of an Iron Age people, perhaps best known for being the archenemy of the Israelites. Excavators had failed, however, to identify any formal burial grounds at these sites, keeping the Philistines shrouded in myth—until now. Adam Aja will discuss the recent discovery of the first-known Philistine cemetery on the southern coast of Israel and how it is helping scientists to research and better understand Philistine origins and culture.



Lecture. Free and open to the public. **HSM**
 Visit website for location: www.semiticmuseum.fas.harvard.edu ①

Thursday, May 4, 6:00 pm

Curiouser and Curiouser

Why Twenty-First-Century Wonderlands Need Anthropology Museums More Than Ever

Ruth Phillips, Canada Research Chair and Professor of Art History, Carleton University, Ottawa; Visiting Professor of Art History, Yale University

Western museums have always been in the business of displaying, provoking, and seeking to satisfy curiosity. The collections of the Peabody and other anthropology museums are, on one level, material deposits of the different forms that "curiosity" has taken through four centuries of European imperial and colonial expansion. Recently, though, postcolonial critiques, Indigenous activism, and emergent settler-colonial discourses have shaken the foundations of museums. Ruth Phillips will discuss the importance of anthropology collections as critical tools for understanding our collective past and present, and for forging and protecting civil society in a world that can seem as bizarre as Lewis Carroll's *Wonderland*.



Lecture. Free and open to the public. **PMAE**
 Geological Lecture Hall, 24 Oxford Street ①
 Related exhibition: *All the World Is Here: Harvard's Peabody Museum and the Invention of American Anthropology*, an exhibition at the Peabody Museum of Archaeology & Ethnology, opens April 22

Wednesday, May 10, 6:00 pm

Where the Roads All End

The Marshall Family's Kalahari Photography

Ilisa Barbash, Curator of Visual Anthropology, Peabody Museum of Archaeology & Ethnology



The Marshall family, which filmed and studied the Ju/'hoansi of the Kalahari Desert, created one of the most significant visual anthropology projects of the twentieth century. Sponsored by the Peabody Museum, the Marshalls made eight trips to Namibia (then South West Africa) in the 1950s to document some of the world's last surviving self-sufficient hunter-gatherers, the Ju/'hoansi and G/wi people (earlier known pejoratively as "Bushmen" and later as the !Kung and the San). Ilisa Barbash will discuss the Marshalls' archive of over 40,000 photographs, the subject of a new book.

Lecture and Book Signing. Free and open to the public. **PMAE**
Geological Lecture Hall, 24 Oxford Street ©

Thursday, May 11, 6:00 pm

The Evolution of Beauty

How Darwin's Forgotten Theory of Mate Choice Shapes the Natural World and Us

Richard O. Prum, William Robertson Coe Professor of Ornithology and Head Curator of Vertebrate Zoology, Peabody Museum of Natural History, Yale University



Can adaptation by natural selection truly account for everything we see in nature? How do animal mating displays and mate choice drive evolutionary change? What insights can they offer about the evolution of human sexuality? Drawing from his new book, *The Evolution of Beauty*, Richard Prum will consider Charles Darwin's long-neglected theory of sexual selection, in which the act of choosing a mate for purely aesthetic reasons is an independent engine of evolutionary change. In a reimagining of how evolutionary forces work, Prum will reveal how mating preferences—what Darwin termed "the taste for the beautiful"—create the extraordinary range of ornament in the natural world.

Evolution Matters Lecture Series

Lecture and Book Signing. Free and open to the public. **HMNH**
Geological Lecture Hall, 24 Oxford Street ©

Series supported by a generous gift from Drs. Herman and Joan Suit

Wednesday, June 21, 5:00–9:00 pm. Stay tuned for event details!

HMSC Summer Solstice Celebration 2017

Night at the Harvard Museums of Science & Culture

Save the date! Enjoy hands-on activities, live music, free admission to the four HMSC museums, and much more! For all ages.

Special Event. Free and open to the public. **HMSC**

Visit website for event details: www.hmsc.harvard.edu ©



SPRING 2017 LECTURE SERIES

EVOLUTION MATTERS

Thursday, February 16, 6:00 pm

Symbiosis and the Evolution of Life in the Ocean

Peter R. Girguis, Professor of Organismic and Evolutionary Biology, Department of Organismic and Evolutionary Biology, Harvard University; Adjunct Research Engineer, Monterey Bay Aquarium Research Institute

Wednesday, March 15, 6:00 pm

Tiny Cells, Global Impact A Journey of Discovery with a Microbe from the Sea

Sallie W. Chisholm, Institute Professor, Department of Biology, Massachusetts Institute of Technology

Thursday, March 23, 6:00 pm

Networking the Ocean Using Technology to Study Real-Time, In Situ Marine Processes

John Delaney, Professor of Oceanography and Jerome M. Paros Endowed Chair in Sensor Networks; Principal Investigator and Director, Regional Scale Nodes

Thursday, April 20, 6:00 pm

Ocean Evolution Today The Impact of Human Activities on the Ecology and Evolution of Marine Organisms

Samantha B. Joye, Athletic Association Professor in Arts and Sciences, Department of Marine Sciences, University of Georgia

Bruce H. Robison, Senior Scientist and Midwater Ecologist, Monterey Bay Aquarium Research Institute

Randi Dawn Rotjan, Research Assistant, Professor, Department of Biology, Boston University Marine Program

Moderated by Peter R. Girguis, Professor of Organismic and Evolutionary Biology, Harvard University; Adjunct Research Engineer, Monterey Bay Aquarium Research Institute

Thursday, May 11, 6:00 pm

The Evolution of Beauty How Darwin's Forgotten Theory of Mate Choice Shapes the Natural World and Us

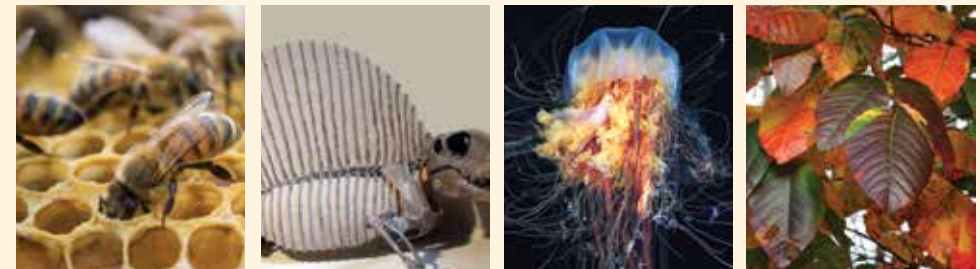
Richard O. Prum, William Robertson Coe Professor of Ornithology and Head Curator of Vertebrate Zoology, Peabody Museum of Natural History, Yale University

Free and open to the public. Harvard Museum of Natural History Series supported by a generous gift from Drs. Herman and Joan Suit

What's in a Name?

An Interactive Exhibit on the Process of Naming Species

Why are there Fried Egg and Purple People Eater jellyfish? How did the Johnny Cash tarantula get its name? Why do some species have multiple common names, and why do they all have Latin names? *What's in a Name?* shows how scientists identify and name species, how names relate to scientific research and the progression of knowledge, and how collections play a crucial role in the process of naming. This Harvard Museum of Natural History project explores these topics with four interactive exhibit stations and free online resources, including a website, an e-book, and videos.



ON EXHIBIT IN THE HARVARD MUSEUM OF NATURAL HISTORY

There are four interactive *What's in a Name?* exhibit stations in the museum:

Honeybees: Arthropods Gallery

Dimetrodon: Romer Hall of Vertebrate Paleontology

Jellies: *Marine Life* in the Putnam Family Gallery

Poison Ivy: *New England Forests* in the Zofnass Family Gallery

ONLINE RESOURCES: www.whatsinaname.hmn.harvard.edu

Species Stories

Stories about eight additional species and their names. Learn more about *E. coli*, pangolins, sugar maples, and the mysterious Yeti crab, among others.

Downloadable E-Book

A 63-page e-book, *What's in a Name? Biological Classification and Scientific Naming*, is available on the website. It includes an engaging introduction to scientific naming and detailed chapters on all the organisms featured in this project.

Videos

Videos from the four exhibit stations are also available on the website.

The *What's in a Name?* project is a partnership among Harvard Museums of Science and Culture (HMSC), Encyclopedia of Life (EOL), and Biodiversity Heritage Library (BHL), as represented by the Ernst Mayr Library of the Museum of Comparative Zoology at Harvard University. It was made possible by the Institute of Museum and Library Services.

UPCOMING

Scale A Matter of Perspective

Opens Friday, March 10. Collection of Historical Scientific Instruments

Scale has long captivated the human imagination, as evidenced in classics such as Lewis Carroll's *Alice's Adventures in Wonderland* and in today's popular movies and television shows. People spend hours making models that shrink or enlarge everyday objects and surroundings. They invent technologies to explore tiny realms or search vast stretches of the cosmos beyond sight. The complexities of interpersonal relationships may be defined by variations in social scale. *Scale: A Matter of Perspective*, examines the concept of scale and its power to transform perceptions of the world and our place in it. Featuring a wide selection of microscopes and telescopes from the Collection of Historical Scientific Instruments and an array of models, miniatures, and cultural and scientific artifacts from collections across the University, the exhibition will challenge visitors to make connections to the world in surprising new ways.



RELATED EVENT

Wednesday, April 26, 6:00 pm (see page 13)

Knocking on Heaven's Door

Scaling the Universe



EXHIBITS

All the World Is Here Harvard's Peabody Museum and the Invention of American Anthropology

Opens Saturday, April 22. Peabody Museum of Archaeology & Ethnology



To mark the 150th anniversary of its founding, the Peabody Museum is featuring a major new exhibition, *All the World Is Here: Harvard's Peabody Museum and the Invention of American Anthropology*. Unveiled within a beautifully restored fourth-floor gallery, the exhibition features over 600 objects, many on display for the first time, including items such as Admiral Robert Peary's dog sledge, exotic materials collected by eighteenth-century Boston ship captains, and stunning archaeological works of art excavated from Ohio's Turner Mounds. Remarkable artifacts are woven into a compelling narrative that traces the early history of the museum's collections and the birth of American anthropology, as envisioned and shaped by one of the museum's earliest directors, Frederic W. Putnam. Visitors will enter the world of a late-nineteenth-century museum and be transported into the midst of the 1893 World's Columbian Exposition, where Putnam and the Peabody Museum presented their anthropological vision and collections to the world.

RELATED EVENTS

The Magic of Java

Free Admission Day in Honor of the Peabody Museum's 150th Anniversary

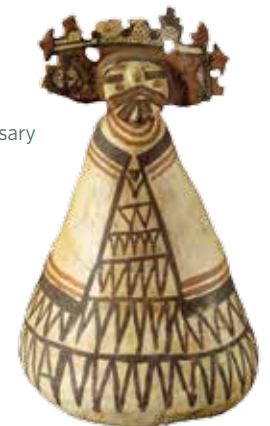
Sunday, April 30, 2:00 pm (see page 14)

Curiouser and Curiouser

Why Twenty-First-Century Wonderlands Need Anthropology

Museums More Than Ever

Thursday, May 4, 6:00 pm (see page 15)



TAKE A HIGHLIGHTS TOUR

The Harvard Museums of Science & Culture offer opportunities for visitors to learn more about current exhibitions, the thousands of artifacts and specimens on display, and the Harvard collections from which they draw. Sign up for a museum/gallery tour or take advantage of one of HMSC's self-guided tours.



Guided Tours

GLASS FLOWERS TOURS

Groups can reserve docent-led tours of the famous Blaschka *Glass Flowers* and *Sea Creatures in Glass* exhibits on Tuesday and Thursday afternoons. Advance registration is required. For registration, capacity, and fee information, visit www.hmnh.harvard.edu/group-visits

HARVARD SEMITIC MUSEUM TOURS

The museum offers free half-hour lunchtime tours each month and individualized group tours can also be scheduled. Go to the "Visit" page at www.semiticmuseum.fas.harvard.edu for more information.

PEABODY MUSEUM 150TH ANNIVERSARY HIGHLIGHTS TOURS

The Peabody Museum offers drop-in tours designed for adult visitors, led by Harvard student guides, on Fridays, Saturdays, and Sundays during the academic year. Group tours may also be scheduled. See website for schedule and reservation information www.peabody.harvard.edu/visit

Self-Guided Tours

MOBILE GALLERY GUIDES

Enhance your visit with additional multimedia for your cell phone or tablet.

From the Nile to the Euphrates: Creating the Harvard Semitic Museum **HSM**

Digging Veritas: Archaeology and History of the Indian College and Student Life at Colonial Harvard **PMAE**



KIDS' DRAWING CLASSES

All drawing classes taught by Erica Beade

Capturing Feathers, Fur, and Scales with Pencil and Paper • AGES 9-13

Saturday, February 4, 2:00-3:30 pm
\$25 members/\$35 nonmembers HMNH

Capturing Flowers with Pencil and Paper • AGES 9-13

Saturday, March 18, 2:00-3:30 pm
\$25 members/\$35 nonmembers HMNH

Capturing Big Dogs and Cats with Pencil and Paper • AGES 9-13

Saturday, April 29, 2:00-3:30 pm
\$25 members/\$35 nonmembers HMNH

ADULT DRAWING CLASS

The Art of Botanical Drawing: A Four-Week Course

Four Saturdays: March 11, 18, 25, and April 1
9:30-11:30 am
\$110 members/\$130 nonmembers HMNH



FAMILY CLASSES

A learning experience for adults and children to share. Designed for families with elementary-age children, with at least one adult required. Fees are per person.

Exploring Science Together: Minerals! • AGES 5+

Amy Gunzelmann, HMNH Science Educator
Saturday, March 4, 10:30 am-12:00 pm
\$10 members/\$20 nonmembers HMNH

Wonderful Oceans: Life beneath the Waves • AGES 8+

Kelsey Lucas, Kira Treibergs, and Dylan Wainwright, Graduate Students, Department of Organismic and Evolutionary Biology, Harvard University

Amy Gunzelmann, HMNH Science Educator

Saturday, April 8, 10:30 am-12:00 pm
\$10 members/\$20 nonmembers HMNH

Exploring Science Together: Marine Life! • AGES 5+

Amy Gunzelmann, HMNH Science Educator
Saturday, May 6, 10:30 am-12:00 pm
\$10 members/\$20 nonmembers HMNH

All classes are held at 26 Oxford Street unless otherwise indicated. Advance registration is required. For easy online registration, visit: www.hmsc.harvard.edu/education

Visit the HMNH website for additional learning opportunities at the museum, including an extensive selection of educational videos: www.hmnh.harvard.edu

Subscribe to the HMNH biweekly e-news to receive information about classes and events.

One membership. Four museums... and countless opportunities

Members of the Harvard Museums of Science & Culture (HMSC) enjoy free admission, invitations to special events, and discounts on programs and purchases. Additionally, memberships support everything we do, from free public lectures and educational outreach to new exhibitions.



Museum access

In addition to unlimited free admission to all four HMSC museums, members receive free admission to the Harvard Art Museums, and to science centers worldwide through the ASTC Travel Passport Program.



Exclusive events

Members receive invitations to exclusive programs, including behind-the-scenes events where they can glimpse items from Harvard's vast museum collections and talk with curators about their work. Recent events have given members access to artifacts of the Peabody Museum, amazing specimens from the Museum of Comparative Zoology, and rarely seen gold and jewels from the Mineralogical & Geological Museum.



Additional benefits

HMSC offers special member prices on classes and discounts in our museum shops, and select local restaurants offer discounts to HMSC members. Access to several Harvard libraries, free parking, and guest passes are included at some membership levels. For a full list of benefits and levels, or to become a member today, see www.hmsc.harvard.edu/membership.

Join or renew online today
visit: www.hmsc.harvard.edu/membership

Contact the Membership/Development office for more information
email: members@hmsc.harvard.edu
call: 617-496-6972

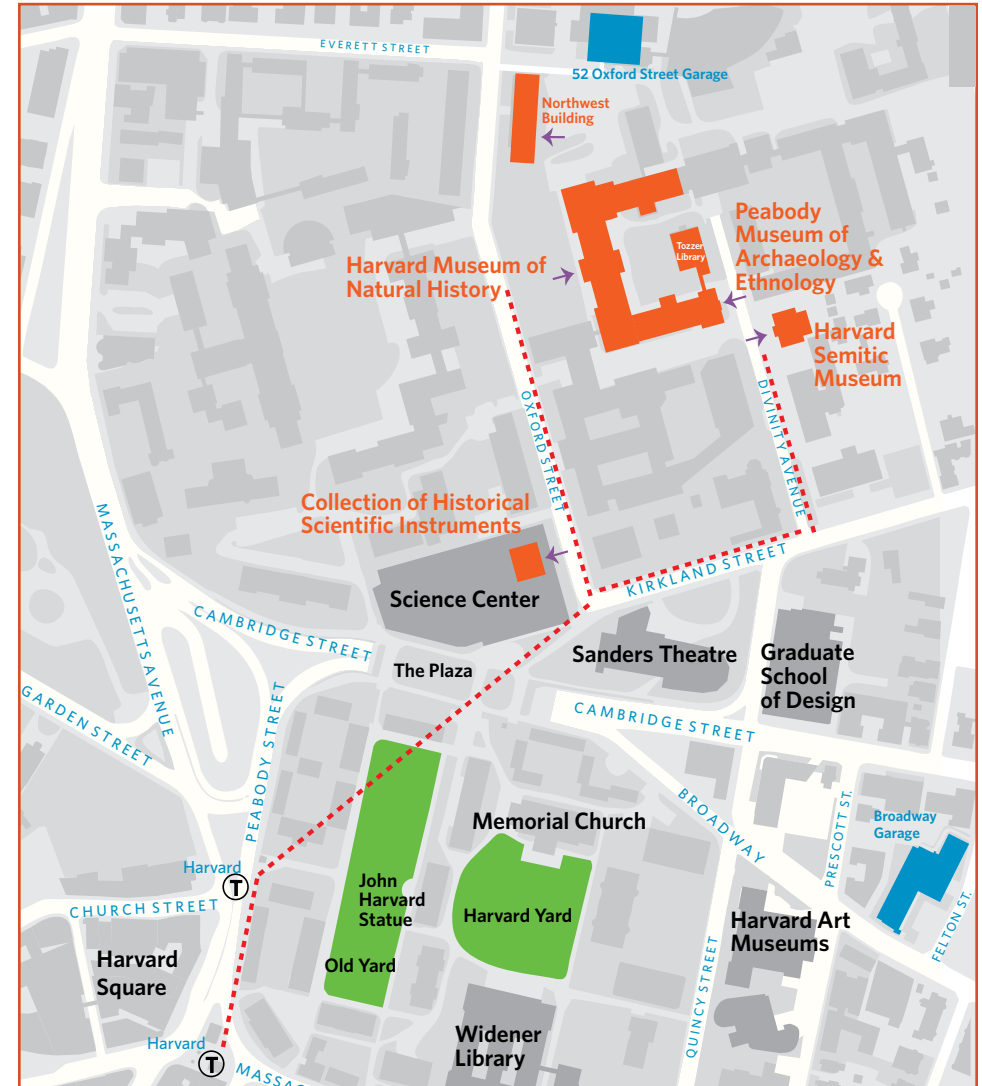


PHOTO CREDITS

Page 3 top: Photos by Patrick Rogers
Page 3 bottom: Courtesy of William Chadwick, NOAA/PMEL
Page 4 top: Photo by Christina Seely
Page 5 bottom: Shutterstock by agsandrew
Page 6 top: Duke University Photography
Page 6 bottom: Photo by Richard Howard
Page 7 bottom: Photo by Mitchell Elend, University of WA
Page 10 bottom: Photo by Digr
Page 11 bottom: Shutterstock by Richard Cavalleri
Page 12 top: Photo by Kate Lemmon
Page 12 bottom left: Shutterstock by Valentina Proskurina
Page 12 bottom right: M. Unal Ozmen
Page 13 bottom: Photo by Stephanie Mitchell. © President and Fellows of Harvard College
Page 14 top: Photo by Jody Diamond, from her collection
Page 15 top: © Tsafirir Abayov/Leon Levy Expedition

Page 16 top: Nwisa, a Ju/'hoansi girl. Photograph probably by Anneliese Scherz. PM 2001.29.297 (digital file #97220006)
Page 16 bottom: Courtesy of the MacArthur Foundation
Page 17 All photos except top and bottom right by Tony Rinaldo
Page 18: Shutterstock, Ethan Daniels
Page 19 top: Lion's Mane Jellyfish by Alexander Semenov, Poison Ivy redleaf by Zen Sutherland
Page 19 bottom: Dodo by Julian Hume
Page 20 top: Transparent globe: Collection of Historical Scientific Instruments. © President and Fellows of Harvard College
Page 21 top: Haida Effigy Pipe. Peabody Museum of Archaeology & Ethnology, PM 94-57-10/R195 (digital file #60742839)
© President and Fellows of Harvard College
Page 21 bottom: Pueblo Sa'lakwmana ceramic effigy pitcher. Peabody Museum of Archaeology & Ethnology, PM #43-39-10/25784 (digital file #60741802) © President and Fellows of Harvard College

HMSC HARVARD MUSEUMS OF SCIENCE & CULTURE

Harvard University

26 Oxford Street, Cambridge, MA 02138

