

# HARVARD MUSEUMS<sup>OF</sup> SCIENCE & CULTURE

**SPRING 2016 PROGRAMS • EXHIBITS • CLASSES**

Collection of Historical Scientific Instruments  
Harvard Museum of Natural History  
Harvard Semitic Museum  
Peabody Museum of Archaeology & Ethnology



# One world. Four museums.

The Harvard Museums of Science & Culture present exhibitions and programs that focus on the natural world, scientific innovation, and human cultural history.

This spring, explore the evolution of radio in *Radio Contact: Tuning in to Politics, Technology, and Culture*, opening in March at the Collection of Historical Scientific Instruments. Visit *In Fine Feather: Selected Featherwork from the Peabody Collections* when it opens in April, and see how plumage has been used decoratively and symbolically in world cultures. And, following the most significant renovation in 100 years, Harvard's world-famous Glass Flowers exhibit reopens at the Harvard Museum of Natural History in May. Marvel at the beauty, unsurpassed artistry, and botanical detail of these treasures in new, state-of-the-art surroundings.

Attend public lectures by experts and noted scholars on a range of topics, including animal intelligence, Egyptian mystery cults and plagues, Native American running traditions, and Darwin's finches, and attend a live radio broadcast of NPR's *You're the Expert*. Inspire and entertain future explorers by taking advantage of HMSC's wide array of programs and classes for kids and families.

Come see the world, in four museums.

- **Collection of Historical Scientific Instruments**
- **Harvard Museum of Natural History**
- **Harvard Semitic Museum**
- **Peabody Museum of Archaeology & Ethnology**

# HMSC

## TABLE OF CONTENTS

<b>Programs</b>	<b>2-15</b>
<b>Exhibits</b>	<b>16-17</b>
<b>Classes</b>	<b>18</b>
<b>Museum Tours</b>	<b>19</b>
<b>Membership</b>	<b>20</b>

Free event parking is available at the 52 Oxford Street Garage for all events marked with a 🅕 (not applicable to classes or exhibitions).

### Front Cover Images (clockwise from top left)



#### Prism Train

Alvan Clark & Sons, 1860-1870. This six-prism train for a direct-vision spectroscope was used to disperse light so that the user could better detect the spectral lines of elements composing the source of the light. This example was attached to the tailpiece of a telescope for astrophysical research. Currently on view in the Putnam Gallery. Collection of Historical Scientific Instruments. 1996-1-0029



#### American Water Lily (*Nymphaea odorata* Aiton)

A glass plant model made by the father and son artists Leopold and Rudolf Blaschka. The Harvard University Herbaria has a collection of 4000 plant models, a selection of which is on display in the Harvard Museum of Natural History.

Ware Collection of Blaschka Glass Models of Plants. Harvard University Herbaria



#### String of Opalescent Glass Beads

Made by the Mende people, Liberia, c. 1920s. Donated by George Harley, a missionary, physician, geographer, anthropologist, and researcher, who traveled with his wife to West Africa and the Ganta mission (Ganta, Liberia), where he worked for over thirty years.

Gift of George Harley. Peabody Museum of Archaeology & Ethnology. PM 32-49-50/73



#### Pattern-blown Glass Bottle

A pale green bottle, partially mold-blown, acquired as part of a larger collection. Likely recovered in a Greek or Roman tomb from Syria/Palestine, 3rd-5th century CE.

Kellner Collection. Harvard Semitic Museum. 1936.2.82

MONDAY, FEBRUARY 8, 6:00 PM

## From Doom and Gloom to Hope Innovations in Ocean Science and Policy

The Honorable Jane Lubchenco, U.S. Science Envoy for the Ocean and University Distinguished Professor and Advisor in Marine Studies, Oregon State University



Jane Lubchenco, former Under Secretary of Commerce for Oceans and Atmosphere and Administrator of the National Oceanic and Atmospheric Administration (NOAA), will discuss how NOAA advances and utilizes research on weather, climate, and oceans to guide its services and to improve environmental stewardship in the U.S. She will also highlight new scientific advances that are transforming attitudes, behaviors, and policies that affect ocean health and the future of humanity.

Prather Lecture. Free and open to the public HMNH Geological Lecture Hall, 24 Oxford St. © Presented in collaboration with the Departments of Organismic and Evolutionary Biology and Molecular and Cellular Biology, Harvard University

SATURDAY, FEBRUARY 13, 10:00 AM-4:00 PM

## I ♥ Science

Explore the marvelous science of our natural world in this annual daylong festival featuring dozens of activities. Use fossil teeth to study animal diets, design an insect maze, investigate the factors that differentiate New England beaches, examine frog adaptations, animal/plant interactions, and more! Awaken your love of science with activities led by Harvard scientists, graduate students, and enthusiastic explorers. Hear short talks on current research at Harvard. This program has something for everyone and is appropriate for children and adults of all ages.

Special event. Regular museum admission rates apply HMNH Harvard Museum of Natural History, 26 Oxford St. ©



WEDNESDAY, FEBRUARY 17, 6:00 PM

## Village Life of Royal Tomb Builders The Latest French Excavations at Deir el-Medina, Egypt

Anne-Claire Salmas, Postdoctoral Research Associate, Brown University Member of the French Archaeological Mission in Deir el-Medina

Located in ancient Thebes (modern Luxor), the site of Deir el-Medina was home to a community of artisans who built the tombs of Egyptian royalty in the Valley of the Kings and the Valley of the Queens during the New Kingdom period (c. 1550-1069 BCE). Egyptologist Bernard Bruyère studied this site from 1921 to 1952 and made important discoveries about the lives of the non-elite in ancient Egypt. The site received little attention until 2012, when the French Institute of Oriental Archaeology resumed excavations at Deir el-Medina. Anne-Claire Salmas will discuss recent discoveries, new avenues of scientific research, and an extensive program of heritage conservation.

Lecture. Free and open to the public HSM Yenching Auditorium, 2 Divinity Ave. ©



WEDNESDAY, FEBRUARY 24, 6:00 PM

## The Secret of Our Success How Culture Is Driving Human Evolution, Domesticating Our Species, and Making Us Smarter

Joseph Henrich, Professor, Department of Human Evolutionary Biology, Harvard University and Co-director of the Centre for Human Evolution, Cognition, and Culture, University of British Columbia

The ability of human groups to socially interconnect and learn from one another has allowed us to create ingenious technologies, sophisticated languages, and complex institutions that have enabled successful expansion into myriad environments. Drawing insights from lost European explorers, clever chimpanzees, mobile hunter-gatherers, neuroscience, ancient bones, and the human genome, Joseph Henrich, author of *The Secret of Our Success*, will discuss how our collective intelligence has propelled our species' evolution.

Lecture and Book Signing. Free and open to the public PMAE HMNH Geological Lecture Hall, 24 Oxford St. ©



TUESDAY, MARCH 1, 6:00 PM

## Destroying Images Current Iconoclasm in Context

James Simpson, Chair, Department of English and  
Donald P. and Katherine B. Loker Professor of English, Harvard University

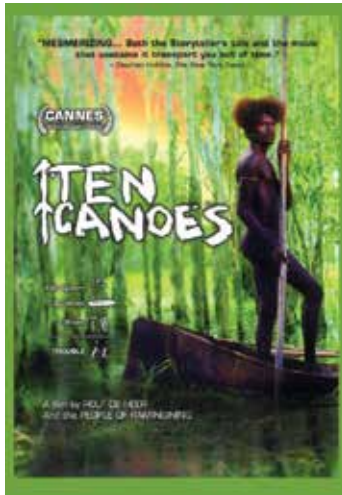


The destruction of iconic images and monuments—iconoclasm—carried out today by extremists representing a wide range of political and religious views, makes many recoil in horror. This response, however, is in part derived from the fact that our Western cultures have themselves been fiercely iconoclastic. James Simpson will discuss the six classic phases of iconoclasm in European history and highlight the role that museums have played in protecting objects from major iconoclastic events. From this history, he will put current iconoclasm into perspective.

Lecture. Free and open to the public PMAE HSM  
Geological Lecture Hall, 24 Oxford St. P

THURSDAY, MARCH 3, 6:00 PM

## Film Screening: *Ten Canoes*



*Ten Canoes* (2006) explores an Indigenous Australian story with a poignant message about the responsibilities of men as husbands and statesmen. Directed by Rolf de Heer, the film is set in Arnhem Land—one of the five regions of the Northern Territory of Australia—and it is the first Australian feature with dialogue in an Indigenous language. The film interweaves past and present using both color and black-and-white scenes inspired by the photographs of Donald Thomson, an anthropologist who worked in Arnhem Land in the mid-1930s. A discussion with Stephen Gilchrist, curator of *Everywhen: The Eternal Present in Indigenous Art from Australia*, a current exhibition at the Harvard Art Museums, will follow the screening.

“Mesmerizing...Both the storyteller’s tale and the movie that contains it, transports you out of time.”

—Stephen Holden, *New York Times*

Film Screening (90 min., in various Yolngu dialects, with English subtitles) and Discussion. Free and open to the public PMAE  
Visit website for location: [www.peabody.harvard.edu](http://www.peabody.harvard.edu) P  
Presented in partnership with the Harvard Art Museums

TUESDAY, MARCH 8, 6:00 PM

## Evolution and Conservation of Island Birds Lessons from Genomics

Scott V. Edwards, Professor of Organismic and Evolutionary Biology, Department of Organismic and Evolutionary Biology and Curator of Ornithology and Alexander Agassiz Professor of Zoology, Museum of Comparative Zoology, Harvard University

Many birds that live on islands have lost adaptations—such as the capacity to fly—typically thought to be fundamental to their evolutionary success. What is it about living on islands that drives these changes? Scott Edwards will discuss how modern genomics research helps us understand the evolution and genetic diversity of island birds and how this research can help conservation efforts.

Evolution Matters Lecture Series. Free and open to the public HMNH  
Geological Lecture Hall, 24 Oxford St. P  
Series supported by a generous gift from Drs. Herman and Joan Suit  
**Also of Interest:** *Islands: Evolving in Isolation*, an exhibition at the Harvard Museum of Natural History



WEDNESDAY, MARCH 9, 6:00 PM

## Citadel Culture The Ethnography of a Southern Military College

Mary Margaret Steedly, Professor of Anthropology, Harvard University



The Citadel Military College of Charleston, South Carolina, is one of the few remaining public military colleges in the U.S. The school cultivates a disciplined lifestyle of rigorous physical challenge, ceremonial display, and cultural conservatism. It celebrates the virtues of uniformity and unity, patriotism, sacrifice, and honor as the foundation of ethical leadership. Drawing on her ethnographic research at The Citadel, Mary Steedly will discuss the culture of this bounded community in a time of transition, when confrontations of race, region, and gender are challenging its ethos of unity and uniformity.

Lecture. Free and open to the public PMAE  
Geological Lecture Hall, 24 Oxford St. P

TWO SATURDAYS, MARCH 12 AND 19, 1:00–3:00 PM (BOTH DAYS)

## Family Clay Flute Workshop

Kathy Tighe, Instructor



Get your hands dirty making a playable ocarina, one of the world's oldest musical instruments. These small, multi-note clay flutes were used in many early cultures and are still found in contemporary music. In this two-part workshop, participants will create an ocarina, sculpt it into an animal shape, experiment with tuning, and visit the related bilingual exhibition in the Peabody Museum, *Ocarinas of the Americas: Music Made in Clay*. Each participant will make a bisque-fired flute (similar to the ones pictured) to paint at home. (Ages 8 and older, accompanied by an adult).

Family Event. Advance registration required  
Visit [www.hmsc.harvard.edu/education](http://www.hmsc.harvard.edu/education) PMAE  
\$35 per person members/\$45 nonmembers  
Peabody Museum, 11 Divinity Ave. ⑩

TUESDAY, MARCH 22, 6:00 PM

## Ecology, Evolution, and Species Diversification in Hawaiian Islands

Rosemary Gillespie, Professor and Schlinger Chair in Systematic Entomology, University of California, Berkeley



Oceanic “hotspot” archipelagoes, such as Hawaii, in which volcanoes have been formed sequentially over extended periods of time, allow us to study a single island as a “snapshot” in time. In this way we can look at how communities of organisms come together and how ecological interactions evolve. Rosemary Gillespie will discuss her research on the evolution and ecology of spiders in the Hawaiian archipelago and why understanding the abundance and interactions of species within ecosystems can provide insights into the forces that shape biodiversity. She will also highlight how this work is relevant to managing invasive species and restoring ecosystems.

Evolution Matters Lecture Series. Free and open to the public HMNH  
Geological Lecture Hall, 24 Oxford St. ⑩  
Series supported by a generous gift from Drs. Herman and Joan Suit  
**Also of Interest:** *Islands: Evolving in Isolation*, an exhibition at the Harvard Museum of Natural History

THURSDAY, MARCH 24, 6:00 PM

## Museums in Tanzania History, Transformation, and Impact

Audax Z. P. Mabulla, Director General, The National Museum of Tanzania

Tanzania hosts a record of more than three million years of human history and diversity, including fossil remains, footprints, and stone toolkits of early humans and hominin ancestors, from sites such as Laetoli, Olduvai Gorge, and Peninj. The National Museum of Tanzania (NMT)—a consortium of six different museums—supports the preservation of the country's rich natural and cultural diversity through scientific research, education, and public outreach programs. Audax Mabulla will discuss the history of NMT and the innovative policy changes it is implementing to better promote an understanding of Tanzania's heritage, while also contributing to building peace, unity, and democracy in the nation.



2016 Hallam L. Movius, Jr. Lecture and Reception  
Free and open to the public PMAE  
Geological Lecture Hall, 24 Oxford St. ⑩

FRIDAY, MARCH 25, 7:30 PM

## Live WBUR Broadcast: You're the Expert

Join us for a special broadcast (90 min.) of *You're the Expert*, the public radio program on WBUR, Boston's NPR news station. In this show, a panel of comedians will try to figure out what a distinguished Harvard scientist studies each day through game show segments and misguided guesses. Don't miss being part of the audience of this hilarious show, hosted by comedian Chris Duffy and produced by Pretty Good Friends.

Special Event. Tickets available online and at the door on a first-come, first-served basis  
\$10 members/\$15 nonmembers CHSI HMSC  
Visit website for location: [www.hmsc.harvard.edu](http://www.hmsc.harvard.edu) ⑩  
Presented in collaboration with WBUR, Boston's NPR news station  
**Also of Interest:** *Radio Contact: Tuning in to Politics, Technology, and Culture*, an exhibition at the Collection of Historical Scientific Instruments, will be open prior to the event from 6:00–7:30 pm



WEDNESDAY, MARCH 30, 6:00 PM

## Conserving the Great Apes in a Changing World

Annette Lanjouw, Vice President, Strategic Initiatives and Great Ape Program, Arcus Foundation



Conserving species, particularly the “charismatic megafauna,” has been a focus of conservation efforts for many decades. With a growing human population, the protection of any single species—compared to the conservation of a landscape or ecosystem—can easily be questioned. Annette Lanjouw will discuss why the conservation of individual species is critical and how this effort enables us to connect with the environment in ways that make action and responses meaningful.

Lecture. Free and open to the public PMAE HMNH  
Geological Lecture Hall, 24 Oxford St. ©  
Presented in collaboration with the Project on Race & Gender in Science & Medicine at the Hutchins Center for African and African-American Research, Harvard University

THURSDAY, MARCH 31, 6:00 PM

## Reviving the Ancient Sounds of Mesoamerican Ocarinas

Jose Cuellar, Professor Emeritus of Latina/Latino Studies, San Francisco State University

Clay ocarinas are thought to be the most common musical instruments used by pre-Columbian societies in Mesoamerica. While little is known about the making and function of these wind instruments—often shaped in animal or human forms—their study reveals that they were associated with both sacred and secular activities. In 2012, musician and ethnologist Jose Cuellar researched the Peabody Museum’s extensive collection of clay ocarinas, flutes, and whistles from archaeological sites throughout Central America and Mexico. In this program he will discuss his findings about these ancient musical instruments and the people who made and played them, and he will also demonstrate their sounds using contemporary ocarinas.

Lecture and Performance. Free and open to the public PMAE  
Geological Lecture Hall, 24 Oxford St. ©  
Also of Interest: *Ocarinas of the Americas: Music Made in Clay*, an exhibition at the Peabody Museum



WEDNESDAY, APRIL 6, 6:00 PM

## The Evolution of Darwin’s Finches on the Galápagos Islands

B. Rosemary Grant and Peter R. Grant, Emeritus Professors, Department of Ecology and Evolutionary Biology, Princeton University

Charles Darwin laid the foundations of our current understanding of evolution in *On the Origin of Species*. In it, he suggested that islands provide the best evidence for evolutionary processes. In the 1970s, Rosemary and Peter Grant decided to follow Darwin’s lead. They began a four-decade search for the causes of evolution in the Galápagos Islands by studying Darwin’s finches on Daphne Major Island. They will discuss how their research—chronicled in their recent book, *40 Years of Evolution*—has advanced the study of island evolution. Following their presentation, Harvard professor Jonathan Losos will engage the Grants in a discussion about the future of evolutionary studies on islands.



Evolution Matters Lecture Series. Free and open to the public HMNH  
Geological Lecture Hall, 24 Oxford St. ©  
Series supported by a generous gift from Drs. Herman and Joan Suit  
Also of Interest: *Islands: Evolving in Isolation*, an exhibition at the Harvard Museum of Natural History

WEDNESDAY, APRIL 13, 6:00 PM

## Mammals on the Move

Francesca Cagnacci, 2015–2016 Sarah and Daniel Hrdy Fellow in Conservation Biology, Harvard University and Researcher, Fondazione Edmund Mach, Research and Innovation Centre, Italy



Mammals move in their environments to use resources, find shelter, escape from predators, compete, interact, and reproduce. Thanks to new technologies, scientists can now study the movement strategies of animals, which are rarely random. Based on her studies tracking large terrestrial mammals across latitudinal and altitudinal gradients in Europe, Francesca Cagnacci will discuss why animal movement patterns are important both for understanding the impact of climate change on ecosystems and for developing sound conservation strategies.

Lecture. Free and open to the public HMNH  
Visit website for location: [www.hmhc.harvard.edu](http://www.hmhc.harvard.edu) ©

FRIDAY, APRIL 15–MONDAY, APRIL 18

## Native American Running Culture, Health, and Sport

Coinciding with both the 2016 Boston Marathon and with the 80th anniversary of Ellison Myers “Tarzan” Brown, Sr. (Narragansett) winning the Marathon in 1936, this multi-day event will explore the history and importance of Native American running traditions, present efforts to support and encourage running in Native American communities today, and promote the many benefits of running. This event will include talks, a panel discussion at the Boston Marathon Expo, and youth/community activities.



Special event. Free and open to the public **PMAE**  
Visit website for specific programs, times, and locations:  
[www.peabody.harvard.edu/native-american-running](http://www.peabody.harvard.edu/native-american-running)

Presented in collaboration with the Boston Athletic Association, Harvard University Native American Program, Office of the Provost, and the Radcliffe Institute of Advanced Study, Harvard University



BOSTON MARATHON®, B.A.A. Marathon™, and the B.A.A. Unicorn Logo are registered trademarks of the Boston Athletic Association. Used with permission from the B.A.A.

TUESDAY, APRIL 19, 6:00 PM

## Mystery Cults and Plagues in Egypt Twenty Years of Excavations at the Funerary Complex of Harwa

Francesco Tiradritti, Assistant Professor, University “Kore” of Enna, Viale dell’Università, Italy and Director of the Italian Archaeological Mission to Luxor, Egypt

Dating to the 7th century BCE, the extensive tomb complex of the grand steward Harwa is one of the largest ever built by a non-royal Egyptian. Located in ancient Thebes (modern Luxor), in the south of present-day Egypt, the site presents stylistic elements from the northern city of Memphis and decorations reminiscent of the mystery cult and resurrection rituals found at the enigmatic structure of Seti I at Abydos, known as the Osireion. Francesco Tiradritti will discuss recent discoveries in the tomb of Harwa, including the remains of ancient plague victims (3rd century CE) that St. Cyprian believed signaled the end of the world, along with two fragmentary Roman funerary portraits that shed new light on 2nd century CE Thebes.



Lecture. Free and open to the public **HSM**  
Yenching Auditorium, 2 Divinity Ave. Presented with support from the Marcella Tilles Memorial Fund

THURSDAY, APRIL 21, 6:00 PM

## (Re)Conceptualizing the Ruins of Monte Albán

Lindsay Jones, Professor, Department of Comparative Studies, Ohio State University

The extensive remains of Monte Albán, an ancient city in the southern Mexican region of Oaxaca that thrived from roughly 500 BCE–700 CE, lie atop a mountain that affords a striking view of the surrounding valley. A UNESCO World Heritage Site since 1987 and one of Mexico’s top archaeological-tourist destinations, Monte Albán was among pre-Hispanic Mesoamerica’s premier capitals. Lindsay Jones will (re)conceptualize Monte Albán as an enduring work of architecture, one that provides a window into Mexico’s past while being a resource for ongoing economic development, literary and artistic expression, spiritual renewal, and the promotion (and contestation) of national, ethnic, and Indigenous identities in Mexico.



Lecture. Free and open to the public **PMAE**  
Geological Lecture Hall, 24 Oxford St.

SATURDAY, APRIL 23, 2:00 PM

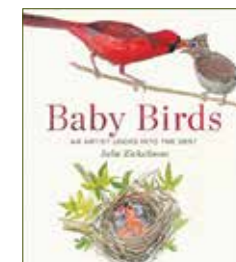
## Baby Birds An Artist Looks into the Nest

Julie Zickefoose, Artist, Writer, and Naturalist

How do baby songbirds develop so quickly, with some taking flight only eleven days after hatching? In 2002, Julie Zickefoose began to draw and paint wild nestlings day-by-day, bearing witness to their swift growth. Over the next thirteen years, she documented these developmental changes in seventeen bird species, from their hatching to their first attempts to fly. She will discuss the artistic process she used in producing 400 life studies that hop and flutter through the pages of her most recent publication, *Baby Birds: An Artist Looks into the Nest*.



Lecture and Book Signing  
Regular museum admission rates apply **HMNH**  
Haller Hall, enter at 26 Oxford St.



SUNDAY, APRIL 24, 7:00 PM

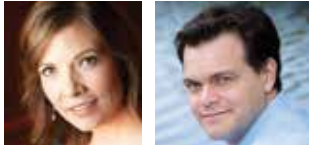
## Harbinger of Spring

### A Concert Inspired by Nature and Gardens



The Arneis Quartet, with mezzo-soprano Krista River and tenor Charles Blandy, will present a concert on the theme of nature and gardens. The program will include Franz Joseph Haydn's String Quartet Op. 76, No. 4, "Sunrise Quartet" and Andrew List's "Eros Dialogues: Songs for Mezzo-Soprano, Tenor and String Quartet," based on the poetry of Walt Whitman and Amy Lowell.

Special Event. Advance tickets required. Tickets available online \$25 members/\$30 nonmembers **HMNH**  
Visit website for tickets and location:  
[www.hmnh.harvard.edu](http://www.hmnh.harvard.edu)



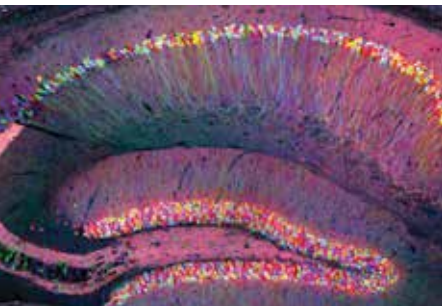
WEDNESDAY, APRIL 27, 6:00 PM

## Revolutions in Brain Exploration

Anne Harrington, Franklin L. Ford Professor of the History of Science, Department of the History of Science and Director of Undergraduate Studies, Harvard University

Jeff Lichtman, Jeremy R. Knowles Professor of Molecular and Cellular Biology, Santiago Ramón y Cajal Professor of Arts and Sciences, Department of Molecular and Cell Biology, and Director, Harvard Center for Biological Imaging, Harvard University

Xiaowei Zhuang, Howard Hughes Medical Institute Investigator,  
David B. Arnold Jr. Professor of Science, Professor of Chemistry and Chemical Biology, and Professor of Physics, Harvard University



In this program, three Harvard professors will discuss the cutting-edge tools that are enabling us to see ever more deeply into the workings of the brain. They will discuss how these instruments are transforming the way brain research is conducted and are pushing the boundaries of neuroscience by enabling scientific breakthroughs.

Special Event. Free and open to the public **CHSI**  
Visit website for location: [www.hmsc.harvard.edu](http://www.hmsc.harvard.edu)   
Presented in collaboration with the Harvard Brain Science Initiative

THURSDAY, APRIL 28, 6:00 PM

## From Supercontinents to Islands

### Evolution in Motion

Gonzalo Giribet, Professor of Organismic and Evolutionary Biology, Department of Organismic and Evolutionary Biology, Curator of Invertebrate Zoology, and Alexander Agassiz Professor of Zoology, Museum of Comparative Zoology, Harvard University

The biological diversity found on an island is closely related to the history of its formation. Islands such as New Zealand, Tasmania, New Caledonia, and Madagascar formed when the supercontinents Pangea and Gondwana broke apart millions of years ago. These islands inherited organisms from their continents of origin, but in the process of becoming isolated, the organisms diversified in ways—and at rates—that were unique. Gonzalo Giribet will discuss the evolutionary processes at play on these continental islands.

Evolution Matters Lecture Series. Free and open to the public **HMNH**  
Geological Lecture Hall, 24 Oxford St.

Series supported by a generous gift from Drs. Herman and Joan Sui

**Also of Interest:** *Islands: Evolving in Isolation*, an exhibition at the Harvard Museum of Natural History



TUESDAY, MAY 3, 6:00 PM

## The Israeli-Palestinian Conflict

### Work in Progress

Miki Kratsman, Photojournalist, Artist, Activist; Head of Photography, Basis School of Art; Contributor to *Haaretz*; and 2011 Robert Gardner Fellow in Photography, Peabody Museum of Archaeology & Ethnology



Distinguished Argentine-Israeli photographer Miki Kratsman has worked in the Palestinian Occupied Territories for over three decades, documenting the evolution of the Israeli-Palestinian conflict, including its daily effect on the Palestinian population. In Kratsman's view, the accumulated documentation of this difficult daily routine is more significant—and more disquieting—than single images of dramatic events. Kratsman will discuss his new book, *The Resolution of the Suspect* (Peabody Museum Press), and his approach to making visual the ways in which the shadow of death hovers, sometimes literally, over his Palestinian subjects.

Lecture, Panel Discussion, and Book Signing  
Free and open to the public **PMAE**  
Geological Lecture Hall, 24 Oxford St.

THURSDAY, MAY 5, 6:00 PM

## Natural and Induced Earthquakes

### The Hidden Threat to Large Cities in the United States

Marine Denolle, Assistant Professor, Department of Earth and Planetary Sciences, Harvard University



A number of large U.S. metropolitan areas face the threat of earthquakes. Seattle, Portland, Los Angeles, and San Francisco—all located near major active faults—are statistically likely to experience major earthquakes in the near future. Seismologists and engineers in these cities are already preparing for “the big ones” (earthquakes with magnitudes greater than 8.0). Now, metropolitan areas such as Dallas and Oklahoma City, although far from plate boundaries, are experiencing moderate, but frequent earthquakes induced by injecting oil and gas wastewater into the ground. Marine Denolle will discuss how scientists are applying new tools to predict and model earthquakes, so that cities can prepare more effective responses to these geological forces.

Lecture. Free and open to the public **HMNH**  
Geological Lecture Hall, 24 Oxford St.

THURSDAY, MAY 12, 6:00 PM

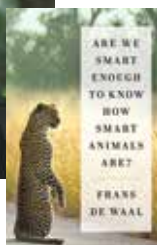
## Are We Smart Enough to Know How Smart Animals Are?

Frans de Waal, C. H. Candler Professor of Psychology and Director of the Living Links Center at the Yerkes National Primate Research Center, Emory University

Vicki Croke, author and host of Boston WBUR’s *The Wild Life*



Primatologist Frans de Waal has written a groundbreaking work that makes us rethink everything we know about animals. Based on research on species ranging from crows to elephants, he will reveal how intelligent animals really are and how much we underestimate their abilities. Vicki Croke, *New York Times* bestselling author of *Elephant Company*, will moderate a discussion with de Waal.



Interview, Book Signing, and Reception  
Free and open to the public **PMAE HMNH**  
Geological Lecture Hall, 24 Oxford St.   
Presented in collaboration with WBUR, Boston’s NPR news station. Reception supported by the Harvard Chapter of Sigma Xi.

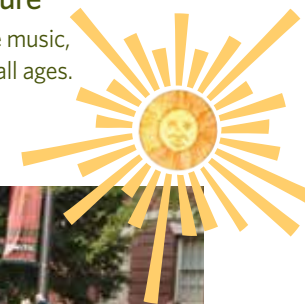
MONDAY, JUNE 20, 5:00-9:00 PM. STAY TUNED FOR EVENT DETAILS!

## Summer Solstice Celebration 2016

### Night at the Harvard Museums of Science & Culture

Save the date! Enjoy hands-on activities, dance performances, live music, free admission to the four HMSC museums, and much more! For all ages.

Special Event. Free and open to the public **HMSC**  
Visit website for event details: [www.hmsc.harvard.edu](http://www.hmsc.harvard.edu)



FRIDAY, JULY 22, 7:00-10:00 PM. STAY TUNED FOR EVENT DETAILS!

## Glass Flowers Soirée

Exclusively for guests over 21, this one-of-a-kind evening will celebrate the Harvard Museum of Natural History’s Glass Flowers exhibition. Come with a date, come with friends, or make new friends as you enjoy signature cocktails and music while strolling through the museum’s sixteen exhibitions!

Special Event. Tickets available online and at the door on a first-come, first-served basis. \$20 members/\$25 nonmembers **HMSC**  
Visit website for event details: [www.hmsc.harvard.edu](http://www.hmsc.harvard.edu)   
Presented in collaboration with the Harvard Summer School



# UPCOMING

## RADIO CONTACT

Tuning in to Politics, Technology, and Culture

OPENING FRIDAY, MARCH 11. COLLECTION OF HISTORICAL SCIENTIFIC INSTRUMENTS

Long before the Internet and television, radio was the medium that informed, entertained, and connected people across cultures and geographic divides. Families gathered together around the living room radio and listened to Franklin Roosevelt's "fireside chats" and detective dramas like *The Shadow*. Commercial, political, and underground networks broadcast to a far-flung society, giving voice to diverse ideas and music, freely available to all. Radio introduced millions to jazz, the comedy of Abbott and Costello, the iconic voice of newsman Edward R. Murrow, and the shock therapy of talk radio. People of all ages tinkered with ham radios in order to talk to people across the country.



Showcasing extensive radio equipment from the Collection of Historical Scientific Instruments, this exhibition will examine the evolving technology and cultures of listening, tinkering, and broadcasting. Come and tune in to a still-vibrant radio culture and history that is being redefined on the Internet.

## IN FINE FEATHER

Selected Featherwork from the Peabody Collections

OPENING WEDNESDAY, APRIL 13. PEABODY MUSEUM OF ARCHAEOLOGY & ETHNOLOGY

Feathers, large and small, plain and colorful, have been used for millennia to enhance the beauty and power of clothing and other objects. Highlighting rare and beautiful pieces from the Peabody Museum's collections, this small exhibit explores the ways in which feathers have been used to signal or endow beauty, wealth, status, and spiritual well-being in cultures around the world.



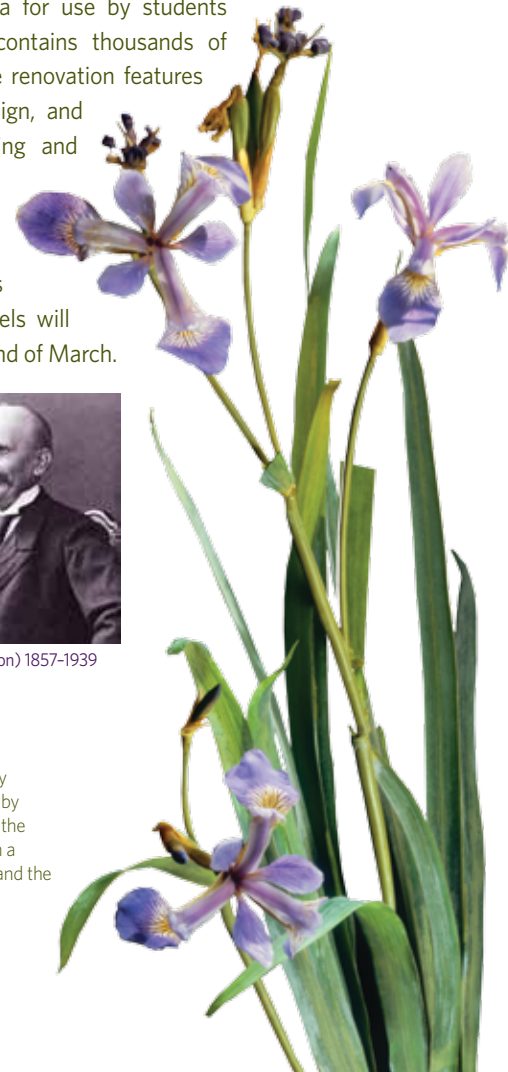
# EXHIBITS

## GRAND REOPENING OF HARVARD'S GLASS FLOWERS EXHIBITION GALLERY

OPENING SATURDAY, MAY 21. HARVARD MUSEUM OF NATURAL HISTORY

**Exquisite beauty. Unparalleled artistry. Amazing botanical detail.**

Closed since early November 2015, the internationally acclaimed Ware Collection of Blaschka Glass Models of Plants, the "Glass Flowers," will reopen in May, following the most expansive renovation in the exhibit's history. Commissioned in 1886 by Harvard University from the German glass artists Leopold and Rudolf Blaschka for use by students and faculty, this now-public collection contains thousands of one-of-a-kind botanical masterpieces. The renovation features model and case restoration, space redesign, and the installation of state-of-the-art lighting and display features that will combine to create a stunning new exhibition showcasing the unique history, irreplaceable artistry, and ongoing scientific relevance of the Glass Flowers. A small exhibit of selected models will remain on temporary display through the end of March.



Leopold Blaschka (father) 1822-1895



Rudolf Blaschka (son) 1857-1939

This exhibition is supported by a generous gift in memory of Melvin R. Seiden AB '52, LLB '55 and a grant provided by the Massachusetts Cultural Facilities Fund, a program of the Commonwealth of Massachusetts administered through a collaborative arrangement between MassDevelopment and the Massachusetts Cultural Council.



## Kids' February & April 2016 School Vacation Classes

### Game Design Week (Grades 6-8)

Tuesday-Friday, February 16-19

9:30 am-3:30 pm

\$180 members/\$200 nonmembers **HMNH**

### Spider Superheroes (Grades 1-4)

Thursday, April 21, 10:00 am-12:00 pm

Free: advance registration required **HMNH**

## Kids' Drawing Classes

Taught by educator and artist Erica Beade

### Capturing Imaginary Animals with Pencil and Paper (Ages 9-13)

Saturday, February 27, 2:00-3:30 pm

\$25 members/\$35 nonmembers **HMNH**

### Capturing Insects with

#### Pencil and Paper (Ages 9-13)

Saturday, March 19, 2:00-3:30 pm

\$25 members/\$35 nonmembers **HMNH**

### Capturing Prehistoric Animals with Pencil and Paper (Ages 9-13)

Saturday, April 9, 2:00-3:30 pm

\$25 members/\$35 nonmembers **HMNH**

## Adult Classes

All skill levels welcome

Taught by educator and artist Erica Beade

### Butterflies and Moths Color Workshop

Saturday, February 27, 9:30 am-12:30 pm

\$40 members/\$50 nonmembers **HMNH**

### The Art of Botanical Drawing: A Four-week Course

Four Saturdays: April 9, 16, 23, and 30

9:30-11:30 am

\$110 members/\$130 nonmembers **HMNH**

## Family Classes

A learning experience for adults and children to share. Fees are per person

### Exploring Science Together Minerals!

Amy Gunzelmann, HMNH Science Educator

Saturday, March 12, 10:30 am-12:00 pm

Adults and children (Grades K-5)

\$10 members/\$20 nonmembers **HMNH**

### High-Tech Zoology

#### Watching the World with Animals' Eyes

Francesca Cagnacci, Sarah and Daniel Hrdy

Fellow in Conservation Biology,

Harvard University

Saturday, April 2, 10:00 am-12:00 pm

Adults and children (Grades 3-8)

\$10 members/\$20 nonmembers **HMNH**

### Exploring Science Together Marine Life!

Amy Gunzelmann, HMNH Science Educator

Saturday, May 14, 10:30 am-12:00 pm

Adults and children (Grades K-5)

\$10 members/\$20 nonmembers **HMNH**

All classes are held at 26 Oxford Street unless otherwise indicated. Advance registration is required. For easy online registration, visit: [www.hmsc.harvard.edu/education](http://www.hmsc.harvard.edu/education)

Visit the HMNH website for additional learning opportunities at the museum, including an extensive selection of educational videos: [www.hmnh.harvard.edu](http://www.hmnh.harvard.edu)

## LEARNING MORE ABOUT THE MUSEUMS

The Harvard Museums of Science & Culture offer opportunities for visitors to learn more about current exhibitions, the thousands of artifacts and specimens on display, and the Harvard collections from which they draw. Sign up for a museum/gallery tour or take advantage of one of HMSC's self-guided tours.



## GUIDED TOURS

### Glass Flowers Tours: Resuming Summer 2016

Groups can reserve docent-led tours of the famous Blaschka *Glass Flowers* and *Sea Creatures in Glass* exhibits on Tuesday and Thursday afternoons. Please note that the Glass Flowers gallery will be closed until May 21, 2016, as it undergoes a major renovation. Advance registration is required. Select "Groups" on the "Visit" page at: [www.hmnh.harvard.edu](http://www.hmnh.harvard.edu) for registration, capacity, and fee information.

### Harvard Semitic Museum Tours

The museum offers free half-hour lunchtime tours each month; individualized group tours can also be scheduled. Go to the "Visit" page at [www.semiticmuseum.fas.harvard.edu](http://www.semiticmuseum.fas.harvard.edu) for more information.

### Peabody Museum Highlights Tours

The Peabody Museum offers drop-in tours designed for adult visitors, led by Harvard student guides three days/week during the academic year. Private group tours may also be scheduled. See website for schedule and reservation information: [www.peabody.harvard.edu/visit](http://www.peabody.harvard.edu/visit).

## SELF-GUIDED TOURS

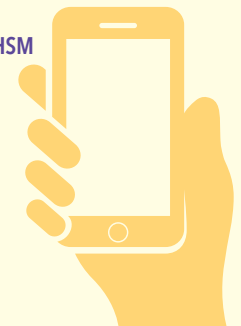
### Mobile Gallery Guides

Enhance your visit with additional multimedia for your cell phone or tablet.

*From the Nile to the Euphrates: Creating the Harvard Semitic Museum* **HSM**

*Islands: Evolving in Isolation* **HMNH**

*Digging Veritas: Archaeology and History of the Indian College and Student Life at Colonial Harvard* **PMAE**



# One Membership. Four Museums. Upcoming Member Events



## Members' Behind-the-Scenes Event

Harvard Semitic Museum  
Wednesday, March 2, 5:00-7:30 pm

Enjoy a rare behind-the-scenes glimpse into the vast collections of the Harvard Semitic Museum and a chance to explore the exhibits after hours. Registration required. Email members @hmsc.harvard.edu to register and include preferred tour time (5:00 or 6:00 pm. Tour space is limited).



## Patron Members' Glass Flowers Preview

Harvard Museum of Natural History

Mingle with fellow Patron Members and get a first look at the newly renovated Glass Flowers gallery before it opens in May. Speak with designers, conservators, and collections managers about all the work that went into restoring this world-renowned exhibition. Additional details to follow.



## Members' Celebration

Harvard Museum of Natural History  
Friday, June 24, 6:30-9:30 pm

Join fellow members of both the Harvard Museums of Science & Culture and the Harvard Art Museums for a celebration at the Harvard Museum of Natural History. Additional details to follow. Ticketed event; register online after April 1.

**Join or renew online today**

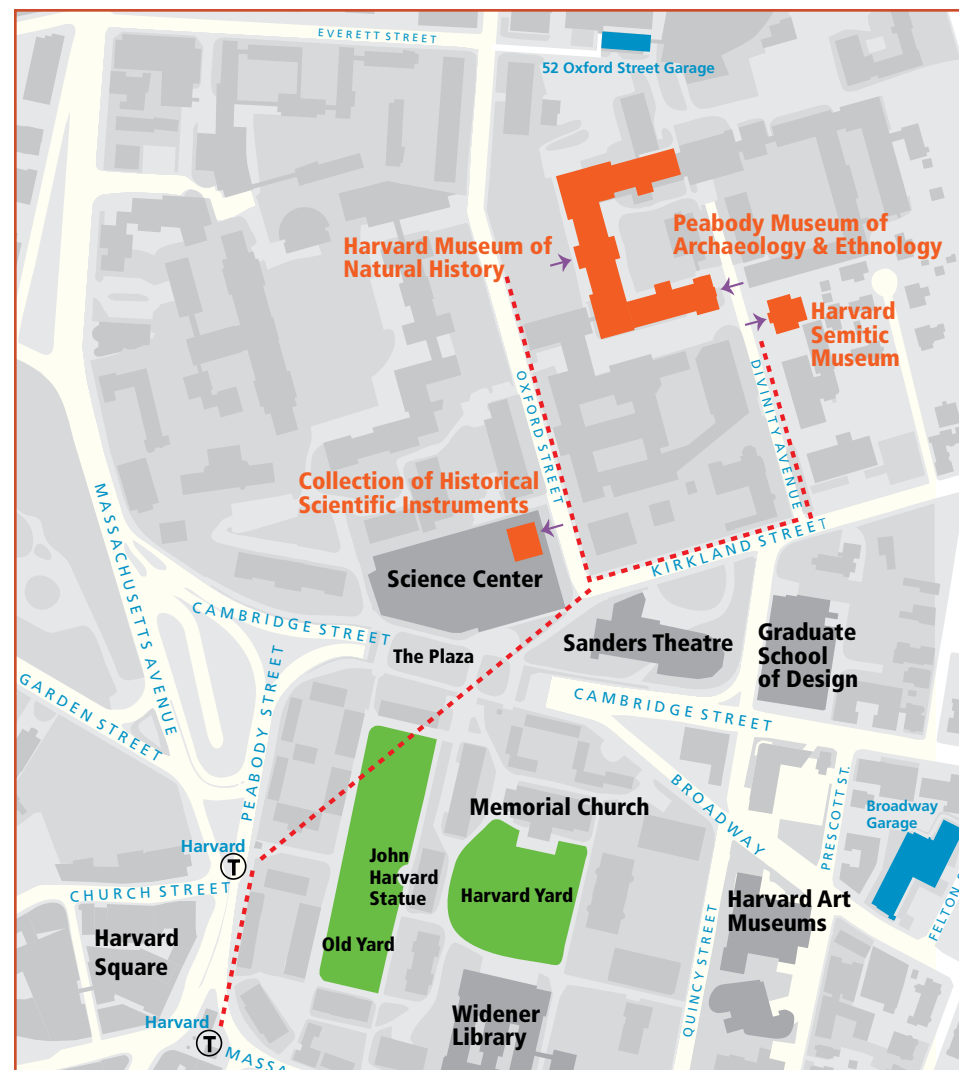
visit: [www.hmsc.harvard.edu/membership](http://www.hmsc.harvard.edu/membership)

**Contact the Membership/Development office for more information**

email: [members@hmsc.harvard.edu](mailto:members@hmsc.harvard.edu)

call: 617-496-6972

Complimentary parking available for these member events



### PHOTO CREDITS

Page 1: Blaschka glass water lily. Photo: Hillel Burger

Page 2 bottom: Photos: MikeStruharik

Page 4 top: Hieronymus Francken II and Jan Brueghel the Elder, *The Archdukes Albert and Isabella Visiting a Collector's Cabinet* (1621-1623). Oil on panel, detail. The Walters Art Museum, Baltimore, Maryland

Page 5 top: Albatross and emu. Photo: Scott Edwards

Page 5 bottom: Summerall Guard drill team. Photo: M. Steedly

Page 6 bottom: G.K. Roderick and R.G. Gillespie

Page 7 top: National Museum, Dar es Salaam, Tanzania.

Photo: Shutterstock by Digr

Page 8 top: Photo: Jurek Wajdowicz

Page 8: bottom: Ocarinas, left to right: PM# 96-35-20/C1285; PM# 976-59-20/24969; PM# 53-25-20/19347

Page 9 bottom: Photo: Miha Krofel, [miha.krofel.googlepages.com](http://miha.krofel.googlepages.com)  
Page 10 top: Courtney Lewis (Mojave and Hopi), member of the Wings Cross Country Championship National Team. Courtesy: Wings of America

Page 11 top: © Associazione Culturale per lo Studio dell'Egitto e del Sudan

Page 12 bottom: Jeff Lichtman, <http://lichtmanlab.fas.harvard.edu>

Page 14: © Catherine Marin

Page 15: Blaschka glass dahlia. Photo: Hillel Burger

Page 16 top: Philco model 40-81T portable AM radio, c. 1940.

Collection of Historical Scientific Instruments # RS0065a

Page 17 bottom: Blaschka glass iris. Photo: Hillel Burger

Page 16 bottom: Mask: PM# 42-28-3015804

Page 20 bottom: Photo: Mike Lovett

**HMSC**  
**HARVARD MUSEUMS OF SCIENCE & CULTURE**

Harvard University

26 Oxford Street, Cambridge, MA 02138

